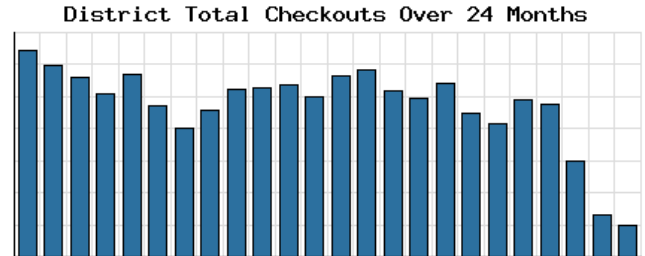


Monthly Stats Brief Narrative

Through May 2020, the number of patrons entering our buildings greatly decreased system-wide compared to this same time year-to-date the previous year. Combined physical and digital use of library materials greatly decreased year-to-date compared to 2019. About 0% of our registered cardholders checked out a physical item this past month, while about 3% of registered cardholders checked out a digital item.



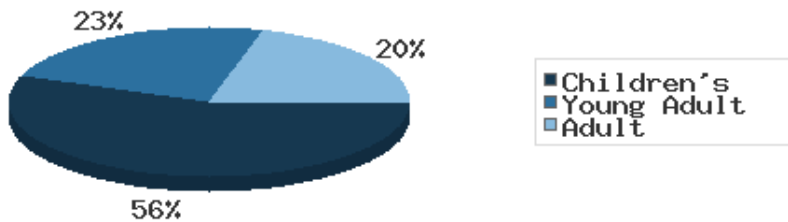
Digital vs. Physical Circulation YTD



Digital usage has comprised about 35% of total materials use year-to-date through May 2020, and digital usage increased from this time in 2019.

In May 2020, BDL patrons saved \$1,141.27 by checking out 65 physical items from the library. Our programming for all ages and our digital services further increase the library's value to the community, bringing the total estimated value to \$14,059.29.

Programs Offered in 2020 YTD



Compared to this time year-to-date 2019, the number of programs BDL offered has decreased. Attendance at programs greatly increased over this same period.

Our locations continued to be closed due to Covid-19. Programs were held virtually using the website and various social media platforms. Attendance for virtual programs decreased slightly from the previous month.

See the full statistical report, starting on the next page, for details and more graphs. The most up-to-date stats are always available online and interactive at <https://www.BranchDistrictLibrary.org/stats>.

Attendance

May 2020

	BDL Monthly Total	BDL YTD	BDL Year End (Year-over-Year Change)				
			2019	2018	2017	2016	2015
Attendance	0	33,217 (-47%)	169,795 (-12%)	191,866 (-1%)	193,922 (-4%)	200,991 (+3%)	195,735 (+17%)
Hours Open	0.00	2,471.00 (-46%)	11,250.25 (-9%)	12,312.00 (+13%)	10,869.15 (-0%)	10,877.50 (+25%)	8,703.00 (+61%)
Number of Hours Scheduled Open Each Week (Tracking Since 1/2018)	238.00		241.00 (-2%)	245.00	0.00	0.00	0.00

Patrons

May 2020

	BDL Monthly Total	BDL YTD	BDL Year End (Year-over-Year Change)				
			2019	2018	2017	2016	2015
Population in our Service Area (Tracking Since 2018)	44,926	44,926 (avg) (-1%)	44,926 (avg)	44,926 (avg)	0 (avg)	0 (avg)	0 (avg)
Library Card Holders	20,971	20,895 (avg) (+3%)	20,773 (avg) (+3%)	20,166 (avg) (-21%)	25,685 (avg) (+3%)	24,899 (avg) (+4%)	23,974 (avg) (+5%)
Patrons Who Checked Out a Physical Item	13	1,117 (avg) (-46%)	1,890 (avg) (-0%)	1,896 (avg) (+0%)	1,887 (avg) (-7%)	2,030 (avg) (-2%)	2,069 (avg) (-2%)
New Library Card Holders Added	8	176 (-34%)	618 (-39%)	1,021 (+21%)	844 (-15%)	989 (-9%)	1,086 (-22%)
In-House Holds Filled for Our Library Card Holders	1	2,599 (-43%)	10,527 (-4%)	10,987 (-6%)	11,650 (+12%)	10,407 (+2%)	10,225 (+7%)
Active Hoopla Users (Began 2016)	340	338 (avg) (+15%)	260 (avg) (-1%)	262 (avg) (+39%)	189 (avg) (+47%)	129 (avg)	0 (avg)
Active OverDrive Users	256	245 (avg) (+22%)	203 (avg) (+3%)	197 (avg) (+26%)	156 (avg) (+16%)	134 (avg) (-7%)	144 (avg) (+7%)

Physical Collection

Tracking Item-Type Breakdown Since 8/2017

May 2020

	BDL Monthly Total	BDL YTD	BDL Year End (Year-over-Year Change)				
			2019	2018	2017	2016	2015
Physical Books and All other Print Materials in the Catalog	98,898		98,689 (-2%)	100,253 (-0%)	100,293	0	0
Physical Audiobooks in the Catalog	1,786		1,783 (-5%)	1,881 (+2%)	1,852	0	0
Physical Video Materials in the Catalog	11,414		11,460 (+8%)	10,579 (+1%)	10,519	0	0
Physical Music Recordings in the Catalog	159		159 (-53%)	337 (-2%)	345	0	0
TOTAL Physical Items in the Catalog	112,257		112,053 (-1%)	113,050 (+0%)	113,009 (-11%)	126,407 (-4%)	131,432 (+1%)

Digital Collection

Tracking Since 8/2017

May 2020

	BDL Monthly Total	BDL YTD	BDL Year End (Year-over-Year Change)				
			2019	2018	2017	2016	2015
Ebooks in All Digital Collections	434,382		370,666 (+21%)	306,595 (+33%)	230,178	0	0
Audiobooks in All Digital Collections	95,814		86,004 (+19%)	71,995 (+36%)	52,833	0	0
Video Materials in All Digital Collections	17,044		16,267 (+14%)	14,229 (-10%)	15,767	0	0
Music Recordings in All Digital Collections	266,978		271,614 (+13%)	239,705 (-14%)	280,259	0	0
Periodicals in All Digital Collections	3,668		0	0	0	0	0
TOTAL of All Digital Collections	817,886		744,551 (+18%)	632,524 (+9%)	579,037	0	0

Total Collection

Tracking Since 8/2017

May 2020

	BDL Monthly Total	BDL YTD	BDL Year End (Year-over-Year Change)				
			2019	2018	2017	2016	2015
Combined Physical Items	112,257		112,053 (-1%)	113,050 (+0%)	113,009 (-11%)	126,407 (-4%)	131,432 (+1%)
Combined Digital Collections	817,886		744,551 (+18%)	632,524 (+9%)	579,037	0	0
TOTAL of all Collections	930,143		856,604 (+15%)	745,574 (+8%)	692,046 (+447%)	126,407 (-4%)	131,432 (+1%)

Use of Physical Items

May 2020

	BDL Monthly Total	BDL YTD	BDL Year End (Year-over-Year Change)				
			2019	2018	2017	2016	2015
Checkouts of Cataloged Items	65	21,797 (-52%)	110,285 (-3%)	113,128 (-6%)	120,916 (+2%)	118,595 (-3%)	121,841 (-1%)
Renewals of Cataloged Items	0	2,598 (-55%)	13,490 (-1%)	13,607 (-8%)	14,804 (-4%)	15,480 (+0%)	15,434 (-4%)
Items Used in the Library But Not Checked Out	0	880 (-56%)	4,166 (+49%)	2,803 (-8%)	3,050 (+126%)	1,351 (+7,011%)	19 (-68%)
Checkouts of Uncataloged Items	0	571 (-56%)	3,294 (-16%)	3,904 (+38%)	2,839 (-38%)	4,578 (+4%)	4,385 (-5%)
Requests from BDL Patrons for Items at Other MeLCat Libraries, Actually Fulfilled	0	1,890 (-59%)	9,873 (+1%)	9,777 (+20%)	8,169 (+15%)	7,112 (+16%)	6,118 (+8%)
Requests from Other MeLCat Libraries for Items at BDL, Actually Fulfilled	0	1,287 (-65%)	7,582 (-23%)	9,810 (+25%)	7,867 (+11%)	7,068 (+46%)	4,855 (-10%)
TOTAL Use of Physical Items	65	29,023 (-53%)	148,690 (-3%)	153,029 (-3%)	157,645 (+2%)	154,184 (+1%)	152,652 (-1%)

Use of Digital Resources

May 2020

	BDL Monthly Total	BDL YTD	BDL Year End (Year-over-Year Change)				
			2019	2018	2017	2016	2015
OverDrive Checkouts	1,337	5,717 (+34%)	10,822 (+14%)	9,501 (+21%)	7,823 (+4%)	7,502 (+2%)	7,380 (+12%)
Hoopla Checkouts (Began 2016)	1,295	6,131 (+8%)	12,530 (-2%)	12,796 (+20%)	10,669 (+96%)	5,432	0
RB Digital Circulations (Began 2020)	199	481	0	0	0	0	0
All Other Digital Services	74	3,323 (-10%)	10,604 (+11%)	9,572 (-72%)	34,047 (-46%)	62,788 (+38%)	45,565 (+203%)
TOTAL Use of Digital Resources	2,905	15,652 (+15%)	33,956 (+7%)	31,869 (-39%)	52,539 (-31%)	75,722 (+43%)	52,945 (+145%)

Total Item Usage

May 2020

	BDL Monthly Total	BDL YTD	BDL Year End (Year-over-Year Change)				
			2019	2018	2017	2016	2015
Combined Checkouts of Physical Items	65	29,023 (-53%)	148,690 (-3%)	153,029 (-3%)	157,645 (+2%)	154,184 (+1%)	152,652 (-1%)
Combined Use of Digital Resources	2,905	15,652 (+15%)	33,956 (+7%)	31,869 (-39%)	52,539 (-31%)	75,722 (+43%)	52,945 (+145%)
TOTAL Uses of All BDL Items	2,970	44,675 (-41%)	182,646 (-1%)	184,898 (-12%)	210,184 (-9%)	229,906 (+12%)	205,597 (+16%)

Cataloging

May 2020

	BDL Monthly Total	BDL YTD	BDL Year End (Year-over-Year Change)				
			2019	2018	2017	2016	2015
Physical Items Added to the Catalog	0	2,534 (-46%)	9,719 (-12%)	11,056 (+0%)	11,009 (-1%)	11,091 (+29%)	8,582 (+40%)
Physical Items Deleted from the Catalog	0	2,366 (-50%)	10,769 (-2%)	10,941 (-55%)	24,366 (+53%)	15,968 (+84%)	8,668 (+40%)

Reference Questions

May 2020

	BDL Monthly Total	BDL YTD	BDL Year End (Year-over-Year Change)				
			2019	2018	2017	2016	2015
General Reference Questions in Person	0	1,700 (-46%)	8,748 (+32%)	6,641 (-12%)	7,537 (+20%)	6,285 (+124%)	2,806 (-0%)
Questions via Telephone Calls	0	951 (-42%)	4,111 (+6%)	3,866 (-24%)	5,079 (+10%)	4,622 (+60%)	2,885 (+0%)
Reference Questions Delivered Online	22	78 (-54%)	281 (+85%)	152 (-35%)	233 (-23%)	304 (+34%)	227 (+77%)
In-Person Questions on Computer or Internet Use	0	1,449 (-53%)	7,505 (+6%)	7,068 (-3%)	7,285 (+11%)	6,568 (+18%)	5,551 (+36%)
In-Person Questions about Our Online Databases	0	34 (-79%)	349 (-15%)	409 (+13%)	363 (+114%)	170 (+85%)	92 (-24%)
In-Person Tax Form Questions	0	269 (-14%)	326 (-37%)	518 (+5%)	493 (+4%)	473 (-18%)	579 (+3%)
TOTAL of All Reference Questions	22	4,481 (-47%)	21,320 (+14%)	18,654 (-11%)	20,990 (+14%)	18,422 (+52%)	12,140 (+15%)

Notary Services
Began 9/2017 at Coldwater Only

May 2020

	BDL Monthly Total	BDL YTD	BDL Year End (Year-over-Year Change)				
			2019	2018	2017	2016	2015
Patrons Who Used our Free Notary Services	0	16 (-63%)	95 (+44%)	66 (+371%)	14	0	0
Documents Notarized	0	22 (-69%)	124 (+85%)	67 (+253%)	19	0	0

MeLCat
May 2020

	BDL Monthly Total	BDL YTD	BDL Year End (Year-over-Year Change)				
			2019	2018	2017	2016	2015
Requests from BDL Patrons for Items at Other MeLCat Libraries	0	2,014 (-58%)	10,538 (+1%)	10,462 (+20%)	8,699 (+14%)	7,643 (+5%)	7,280 (+9%)
Requests from BDL Patrons for Items at Other MeLCat Libraries, Actually Fulfilled	0	1,890 (-59%)	9,873 (+1%)	9,777 (+20%)	8,169 (+15%)	7,112 (+16%)	6,118 (+8%)
Requests from Other MeLCat Libraries for Items at BDL	0	1,727 (-56%)	8,405 (-18%)	10,296 (+29%)	7,994 (+13%)	7,096 (+18%)	5,989 (-10%)
Requests from Other MeLCat Libraries for Items at BDL, Actually Fulfilled	0	1,287 (-65%)	7,582 (-23%)	9,810 (+25%)	7,867 (+11%)	7,068 (+46%)	4,855 (-10%)

Programs Held
May 2020

	BDL Monthly Total	BDL YTD	BDL Year End (Year-over-Year Change)				
			2019	2018	2017	2016	2015
Juvenile Programs Held	37	261 (-44%)	536 (-27%)	730 (+1%)	720 (+19%)	604 (+5%)	575 (+19%)
Young Adult Programs Held	1	108 (-18%)	264 (-22%)	338 (+41%)	239 (+47%)	163 (+8%)	151 (+20%)
Adult Programs Held	28	95 (+16%)	167 (+23%)	136 (-7%)	146 (-34%)	220 (+40%)	157 (+26%)
Juvenile Summer Reading Events Held	0	0	93 (-18%)	114 (+20%)	95 (+7%)	89 (+6%)	84 (+8%)
Young Adult Summer Reading Events Held	0	0	53 (+8%)	49 (-14%)	57 (+97%)	29 (-66%)	85 (+183%)
Adult Summer Reading Events Held	0	0	17 (+467%)	3	0	3 (-40%)	5 (+25%)
Computer Classes Held	0	0	81 (+305%)	20 (-9%)	22 (+57%)	14 (-36%)	22 (-8%)
TOTAL of All Programs	66	464 (-34%)	1,211 (-13%)	1,390 (+9%)	1,279 (+14%)	1,122 (+4%)	1,079 (+24%)

Program Attendance

May 2020

	BDL Monthly Total	BDL YTD	BDL Year End (Year-over-Year Change)				
			2019	2018	2017	2016	2015
Attendees at Juvenile Programs	4,288	12,364 (+54%)	10,939 (-30%)	15,725 (+2%)	15,351 (+48%)	10,371 (+23%)	8,415 (+7%)
Attendees at Young Adult Programs	193	2,909 (+235%)	2,106 (-35%)	3,218 (-15%)	3,806 (+276%)	1,011 (+14%)	884 (+38%)
Attendees at Adult Programs	2,283	7,470 (+825%)	2,627 (+33%)	1,970 (-0%)	1,979 (-3%)	2,048 (-5%)	2,157 (+65%)
Attendees at Juvenile Summer Reading Events	0	0	1,725 (-55%)	3,864 (+24%)	3,116 (-20%)	3,904 (+56%)	2,499 (-21%)
Attendees at Young Adult Summer Reading Events	0	0	251 (-25%)	333 (-50%)	671 (+127%)	295 (+14%)	259 (-16%)
Attendees at Adult Summer Reading Events	0	0	310 (+265%)	85	0	21 (-73%)	77 (-31%)
Attendees at Computer Classes	0	0	26 (+30%)	20 (-5%)	21 (+75%)	12 (-59%)	29 (+4%)
TOTAL of All Program Attendance	6,764	22,743 (+133%)	17,984 (-29%)	25,215 (+1%)	24,944 (+41%)	17,662 (+23%)	14,320 (+7%)

Summer Reading Overview

May 2020

	BDL Monthly Total	BDL YTD	BDL Year End (Year-over-Year Change)				
			2019	2018	2017	2016	2015
Juveniles Signed Up for Summer Reading Program	0	0	345 (-54%)	747 (-35%)	1,153 (+19%)	967 (+13%)	859
Young Adults Signed up for Summer Reading Program	0	0	90 (-76%)	378 (-2%)	385 (+241%)	113 (-64%)	311
Adults Signed Up for Summer Reading Program	0	0	159 (-36%)	248 (+112%)	117 (+36%)	86 (+1%)	85
Juveniles who Completed Summer Reading Program	0	0	203 (-22%)	260 (-50%)	518 (+13%)	459 (-10%)	512
Young Adults who Completed Summer Reading Program	0	0	60 (-56%)	135 (-50%)	268 (+332%)	62 (-49%)	122
Adults who Completed Summer Reading Program	0	0	118 (-28%)	165 (+72%)	96 (+60%)	60 (+7%)	56
Juvenile Summer Reading Events Held	0	0	93 (-18%)	114 (+20%)	95 (+7%)	89 (+6%)	84 (+8%)
Young Adult Summer Reading Events Held	0	0	53 (+8%)	49 (-14%)	57 (+97%)	29 (-66%)	85 (+183%)
Adult Summer Reading Events Held	0	0	17 (+467%)	3	0	3 (-40%)	5 (+25%)
Attendees at Juvenile Summer Reading Events	0	0	1,725 (-55%)	3,864 (+24%)	3,116 (-20%)	3,904 (+56%)	2,499 (-21%)
Attendees at Young Adult Summer Reading Events	0	0	251 (-25%)	333 (-50%)	671 (+127%)	295 (+14%)	259 (-16%)
Attendees at Adult Summer Reading Events	0	0	310 (+265%)	85	0	21 (-73%)	77 (-31%)

Summer Reading Program Signups

May 2020

	BDL Monthly Total	BDL YTD	BDL Year End (Year-over-Year Change)				
			2019	2018	2017	2016	2015
Juveniles Signed Up for Summer Reading Program	0	0	345 (-54%)	747 (-35%)	1,153 (+19%)	967 (+13%)	859
Young Adults Signed up for Summer Reading Program	0	0	90 (-76%)	378 (-2%)	385 (+241%)	113 (-64%)	311
Adults Signed Up for Summer Reading Program	0	0	159 (-36%)	248 (+112%)	117 (+36%)	86 (+1%)	85
TOTAL Summer Reading Program Signups	0	0	594 (-57%)	1,373 (-17%)	1,655 (+42%)	1,166 (-7%)	1,255

Summer Reading Program Completions

May 2020

	BDL Monthly Total	BDL YTD	BDL Year End (Year-over-Year Change)				
			2019	2018	2017	2016	2015
Juveniles who Completed Summer Reading Program	0	0	203 (-22%)	260 (-50%)	518 (+13%)	459 (-10%)	512
Young Adults who Completed Summer Reading Program	0	0	60 (-56%)	135 (-50%)	268 (+332%)	62 (-49%)	122
Adults who Completed Summer Reading Program	0	0	118 (-28%)	165 (+72%)	96 (+60%)	60 (+7%)	56
TOTAL Summer Reading Program Completions	0	0	381 (-32%)	560 (-37%)	882 (+52%)	581 (-16%)	690

Library-Provided Computer Services

May 2020

	BDL Monthly Total	BDL YTD	BDL Year End (Year-over-Year Change)				
			2019	2018	2017	2016	2015
One-hour sessions on Library Wifi	18,186	134,738 (-35%)	474,750 (+2%)	465,219 (+9%)	425,714 (+4%)	410,437 (+17%)	351,423 (+18%)
Desktop, Laptop, and Tablet Computers Available for Public Use	88		88 (-1%)	89 (+22%)	73	73	73
Sessions on Library-Provided Computers	0	6,356 (-49%)	34,577 (-24%)	45,687 (+3%)	44,181 (+6%)	41,513 (-11%)	46,405 (+6%)
Hours Library-Provided Computers Used (Tracking Since 2018)	0.00	4,447.22 (-50%)	24,280.36 (-2%)	24,701.55	0.00	0.00	0.00
Desktop, Laptop, and Tablet Computers Available for Staff Use	52		52 (+4%)	50 (+22%)	41	41	41

Website Stats

May 2020

	BDL Monthly Total	BDL YTD	BDL Year End (Year-over-Year Change)				
			2019	2018	2017	2016	2015
Monthly Website Sessions	1,707	16,240 (-30%)	58,161 (+28%)	45,594 (-38%)	73,326 (-2%)	75,139 (+3%)	72,706 (+6%)
Monthly Website Page Views	4,381	35,501 (-35%)	129,778 (+9%)	118,634 (-33%)	177,799 (-2%)	182,084 (+7%)	169,630 (+4%)

Faxes, Prints, and Sales

May 2020

	BDL Monthly Total	BDL YTD	BDL Year End (Year-over-Year Change)				
			2019	2018	2017	2016	2015
Fax Pages Received	0	110 (-29%)	350 (-16%)	419 (+61%)	260 (+19%)	219 (+27%)	173 (+3%)
Fax Pages Sent	0	1,447 (-62%)	9,524 (+3%)	9,249 (+138%)	3,879 (+123%)	1,741 (-7%)	1,882 (+39%)
Free Prints for Job Seekers	0	676 (-45%)	2,796 (-23%)	3,631 (+16%)	3,128 (+9%)	2,878 (+23%)	2,335 (-23%)
Black and White Patron Prints (Tracking Since 6/2016)	0	15,644 (-49%)	75,818 (-6%)	81,016 (+7%)	75,606 (+113%)	35,561	0
Color Patron Prints (Tracking Since 6/2016)	0	2,227 (-52%)	11,299 (-8%)	12,285 (+20%)	10,253 (+154%)	4,036	0
Flash Drives Sold (Tracking Since 6/2016)	0	8 (-53%)	37 (-10%)	41 (-27%)	56 (+4%)	54	0
Earbuds Sold (Tracking Since 6/2016)	0	82 (-54%)	462 (-14%)	538 (+29%)	416 (+151%)	166	0

Fines and Fees
Overdue Fines Dropped in 2017

May 2020

	BDL Monthly Total	BDL YTD	BDL Year End (Year-over-Year Change)				
			2019	2018	2017	2016	2015
Fines and Fees Payments Received	\$ 0.00	\$ 460.87 (-65%)	\$ 3,092.62 (+28%)	\$ 2,412.73 (-68%)	\$ 7,628.31 (-24%)	\$ 10,062.96 (-30%)	\$ 14,448.76 (-3%)
Outstanding Fines and Fees	\$ 48,356.57		55,588.42 (-0%)	55,850.27 (-34%)	84,232.33 (-63%)	228,102.90 (+3%)	221,076.26 (+5%)

Debt Collections
Unique Management Services, Inc.
Tracking Since 2014

May 2020

	BDL Monthly Total	BDL YTD	BDL Year End (Year-over-Year Change)				
			2019	2018	2017	2016	2015
Fine Payments as a Result of Collection Agency's Efforts	\$ 0.00	\$ 0.00	\$ 268.00 (-94%)	\$ 4,183.45 (+1,727%)	\$ 229.00 (-76%)	\$ 947.13 (+16%)	\$ 818.48 (+1%)
Library Materials Returned as a Result of Collection Agency's Efforts	\$ 0.00	\$ 0.00	\$ 0.00	\$ 462.00 (-48%)	\$ 888.95 (-33%)	\$ 1,317.93 (-2%)	\$ 1,346.89 (-28%)
What We Paid Collection Agency for Their Services	\$ 0.00	\$ 0.00	\$ 134.10 (-75%)	\$ 528.66 (-5%)	\$ 558.08 (-45%)	\$ 1,022.23 (-3%)	\$ 1,051.42 (+40%)

Value to Our Service Area
 Visit <https://www.BranchDistrictLibrary.org/value>
 to learn how we determine these numbers.

May 2020

	BDL Monthly Total	BDL YTD	BDL Year End (Year-over-Year Change)				
			2019	2018	2017	2016	2015
Value from Physical Item Checkouts	\$ 1,141.27	\$ 340,811.50 (-54%)	\$ 1,755,554.08 (-7%)	\$ 1,888,907.75 (-12%)	\$ 2,135,671.28 (+0%)	\$ 2,132,387.79 (-2%)	\$ 2,167,140.68 (+0%)
Value from Attending Programs (Tracking Since 1/2018)	\$ 25.00	\$ 16,995.00 (-64%)	\$ 118,485.00 (-6%)	\$ 125,795.00	\$ 0.00	\$ 0.00	\$ 0.00
Value from Fax Service (Tracking Since 1/2018)	\$ 0.00	\$ 1,529.00 (-61%)	\$ 10,205.00 (+6%)	\$ 9,668.00	\$ 0.00	\$ 0.00	\$ 0.00
Value from Employment Prints (Tracking Since 1/2018)	\$ 0.00	\$ 100.50 (-46%)	\$ 419.40 (-23%)	\$ 544.65	\$ 0.00	\$ 0.00	\$ 0.00
Value from Notary Services (Tracking Since 1/2018)	\$ 0.00	\$ 75.00 (-65%)	\$ 475.00 (+44%)	\$ 330.00	\$ 0.00	\$ 0.00	\$ 0.00
Value from Digital Services (Tracking Since 1/2018)	\$ 11,620.00	\$ 61,480.00 (+12%)	\$ 135,824.00 (+7%)	\$ 127,476.00	\$ 0.00	\$ 0.00	\$ 0.00
Value from Using Library Computers (Tracking Since 1/2018)	\$ 0.00	\$ 13,341.66 (-50%)	\$ 72,841.08 (-2%)	\$ 74,104.66	\$ 0.00	\$ 0.00	\$ 0.00
Value from Using Library Wifi (Tracking Since 1/2018)	\$ 1,273.02	\$ 9,431.66 (-35%)	\$ 33,232.50 (+2%)	\$ 32,565.33	\$ 0.00	\$ 0.00	\$ 0.00
TOTAL Value of Free Library Services	\$ 14,059.29	\$ 443,764.32 (-50%)	\$ 2,127,036.06 (-6%)	\$ 2,259,391.39 (+6%)	\$ 2,135,671.28 (+0%)	\$ 2,132,387.79 (-2%)	\$ 2,167,140.68 (+0%)

Materials Expenditures

Tracking since 2018

May 2020

	BDL Monthly Total	BDL YTD	BDL Year End (Year-over-Year Change)				
			2019	2018	2017	2016	2015
Amount Spent on Books	\$ 195.12	\$ 22,383.84 (-48%)	\$ 76,878.30 (-18%)	\$ 93,763.50	\$ 0.00	\$ 0.00	\$ 0.00
Amount Spent on Periodicals	\$ 108.50	\$ 130.29 (-64%)	\$ 5,663.99 (-20%)	\$ 7,085.59	\$ 0.00	\$ 0.00	\$ 0.00
Amount Spent on Audiovisual Materials	\$ 269.21	\$ 3,983.49 (-39%)	\$ 15,009.96 (-17%)	\$ 17,998.47	\$ 0.00	\$ 0.00	\$ 0.00
Amount Spent on Digital Resources	\$ 5,846.06	\$ 15,004.25 (+25%)	\$ 28,412.62 (-35%)	\$ 43,798.90	\$ 0.00	\$ 0.00	\$ 0.00
TOTAL Spent on All Library Materials	\$ 6,418.89	\$ 41,501.87 (-33%)	\$ 125,964.87 (-23%)	\$ 162,646.46	\$ 0.00	\$ 0.00	\$ 0.00

Other Expenditures

Tracking since 2018

May 2020

	BDL Monthly Total	BDL YTD	BDL Year End (Year-over-Year Change)				
			2019	2018	2017	2016	2015
Total Materials Expenditures	\$ 6,418.89	\$ 41,501.87 (-33%)	\$ 125,964.87 (-23%)	\$ 162,646.46	\$ 0.00	\$ 0.00	\$ 0.00
Total Staff Expenditures	\$ 110,689.31	\$ 411,200.56 (-30%)	\$ 1,172,756.92 (-20%)	\$ 1,469,560.33	\$ 0.00	\$ 0.00	\$ 0.00
Expenditures in other categories	\$ 38,741.68	\$ 161,075.93 (+24%)	\$ 353,231.25 (-16%)	\$ 422,747.74	\$ 0.00	\$ 0.00	\$ 0.00
TOTAL Expenditures in all Categories	\$ 179,975.35	\$ 727,918.00 (-10%)	\$ 1,797,240.67 (-13%)	\$ 2,054,954.53	\$ 0.00	\$ 0.00	\$ 0.00

Staffing

May 2020

	BDL Monthly Total	BDL YTD	BDL Year End (Year-over-Year Change)				
			2019	2018	2017	2016	2015
Total BDL Staff	36	36 (avg) (-5%)	37 (avg) (-8%)	40 (avg) (+5%)	37 (avg) (+9%)	34 (avg) (+17%)	29 (avg) (-3%)
BDL Staff with MLS Degree	5	5 (avg)	5 (avg) (-33%)	6 (avg) (+20%)	5 (avg) (+150%)	3 (avg)	2 (avg)
Worked Full-Time Equivalents	26.21	26.55 (avg)	25.78 (avg) (-4%)	26.92 (avg) (+8%)	24.91 (avg) (+41%)	17.90 (avg) (+13%)	15.75 (avg) (-6%)
Hours of Specialized Training for Staff (Tracking Since 1/2019)	78	268 (+160%)	534	0	0	0	0
Hours Volunteers Worked at the Library (Tracking Since 1/2019)	0	39 (-95%)	1,065	0	0	0	0

Outreach Services

Began 2018

May 2020

	BDL Monthly Total	BDL YTD	BDL Year End (Year-over-Year Change)				
			2019	2018	2017	2016	2015
Number of Patrons Served by Outreach Services	0	0	70 (-8%)	76 (+2,433%)	3	0	0
Number of Items Delivered to Outreach Patrons	0	2 (-99%)	220 (-64%)	606 (+2,231%)	26	0	0

Coldwater Branch Heritage Room

Stats part of Coldwater Branch totals above; shown here for convenience.

May 2020

	Heritage Room	BDL YTD	BDL Year End (Year-over-Year Change)				
			2019	2018	2017	2016	2015
Heritage Room Attendance	0	99 (-46%)	484 (-34%)	736 (+12%)	658 (-7%)	705 (+51%)	468 (+50%)
In-Person Reference Questions	0	76 (-51%)	412 (-42%)	708 (+29%)	550 (+664%)	72 (+140%)	30 (-27%)
Reference Telephone Calls	0	41 (-56%)	232 (-16%)	277 (-36%)	433 (+15%)	376 (+83%)	206 (+145%)
Online Reference Questions	1	10 (-66%)	65 (+8%)	60 (-5%)	63 (-24%)	83 (+8%)	77 (+79%)

Coldwater Branch Kids' Place

Stats part of Coldwater Branch totals above; shown here for convenience.
Tracking separately since April 2019.

May 2020

	Kids' Place	BDL YTD	BDL Year End (Year-over-Year Change)				
			2019	2018	2017	2016	2015
Kids' Place Attendance	0	1,873 (+5%)	9,710	0	0	0	0
In-Person Reference Questions	0	121 (-37%)	575	0	0	0	0
Reference Telephone Calls	0	31 (-51%)	224	0	0	0	0
Online Reference Questions	0	0	0	0	0	0	0

Coldwater Branch Teen Space

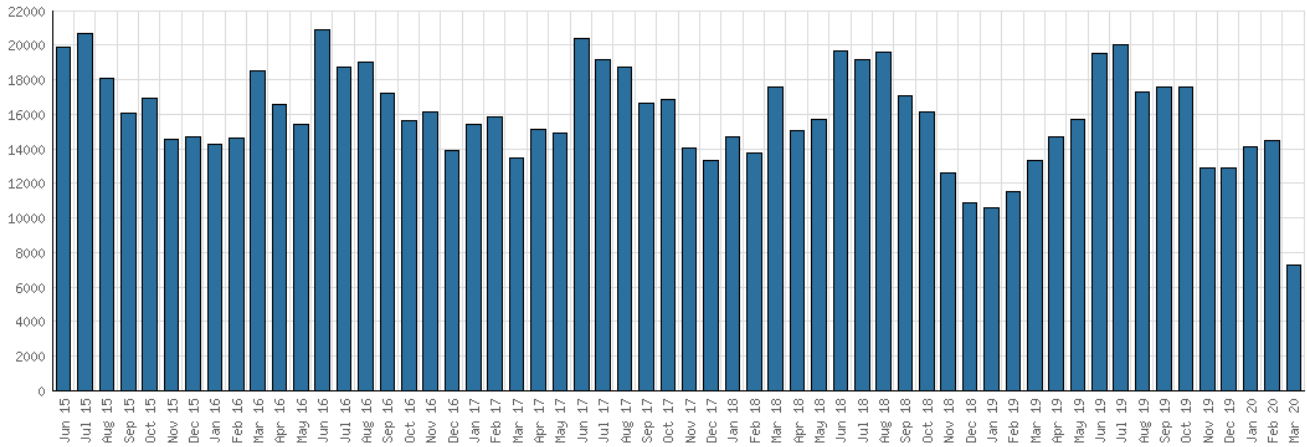
Stats part of Coldwater Branch totals above; shown here for convenience.
Tracking separately since April 2019.

May 2020

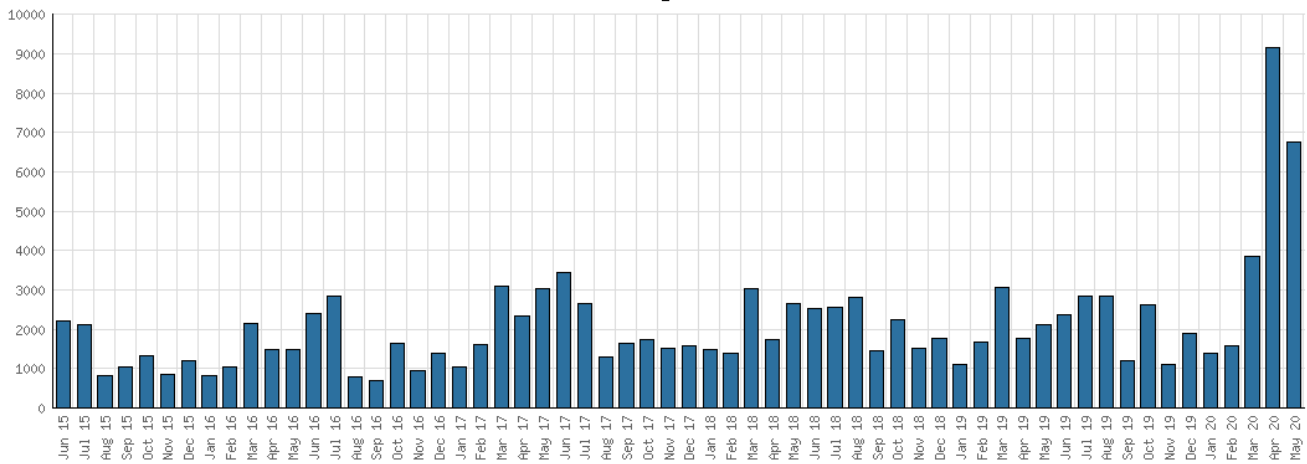
	Teen Space	BDL YTD	BDL Year End (Year-over-Year Change)				
			2019	2018	2017	2016	2015
Teen Space Attendance	0	766 (-45%)	4,172	0	0	0	0
In-Person Reference Questions	0	4 (-85%)	93	0	0	0	0
Reference Telephone Calls	0	0	0	0	0	0	0
Online Reference Questions	0	0	0	0	0	0	0

Selected Graphs 5-year Monthly Trends

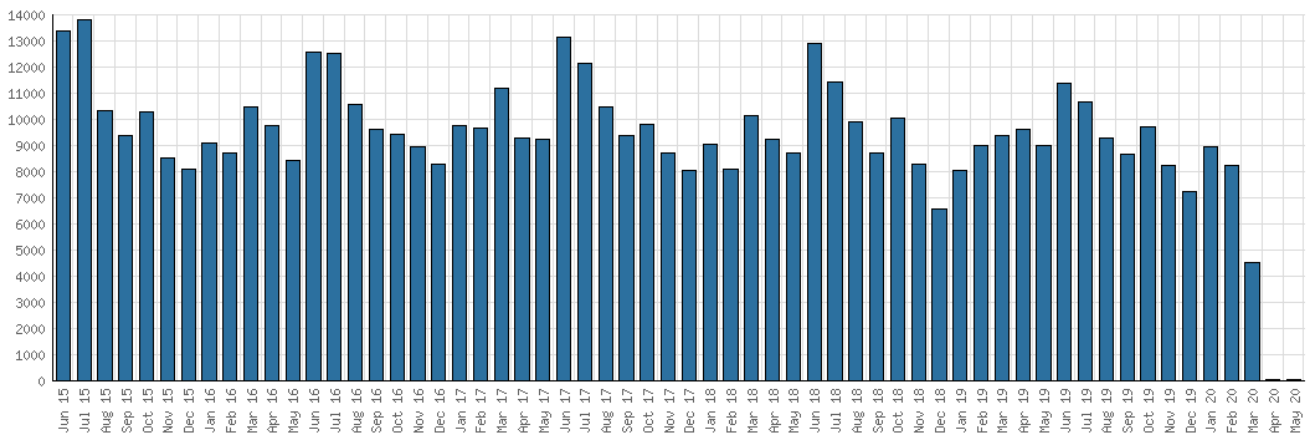
District Attendance



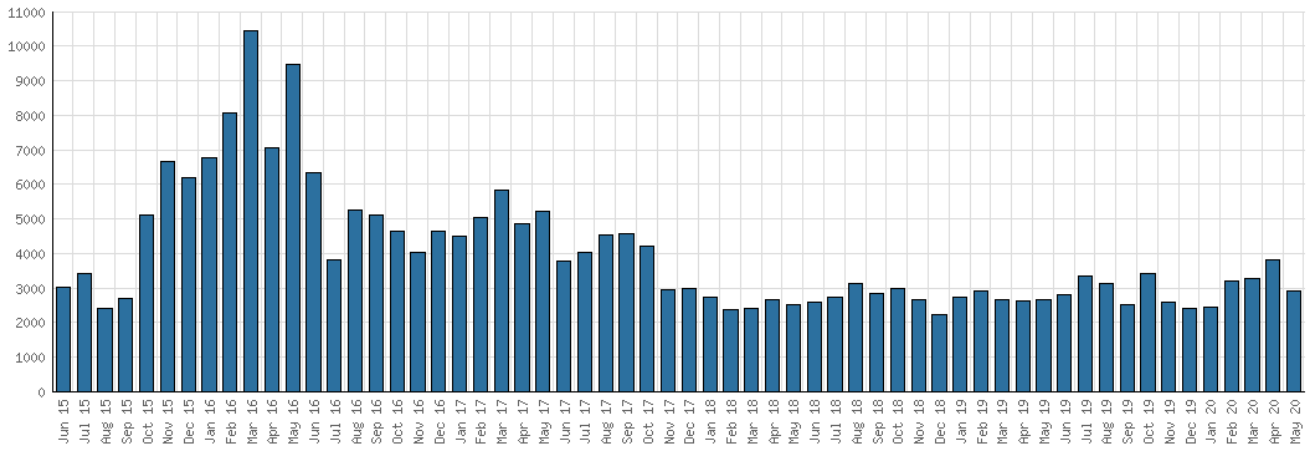
District Program Attendance



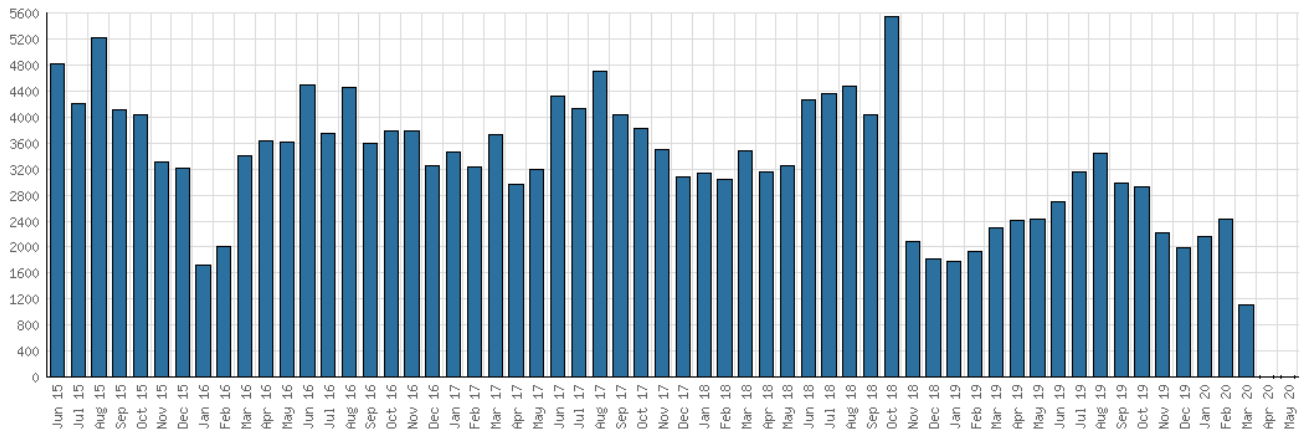
District Physical Checkouts



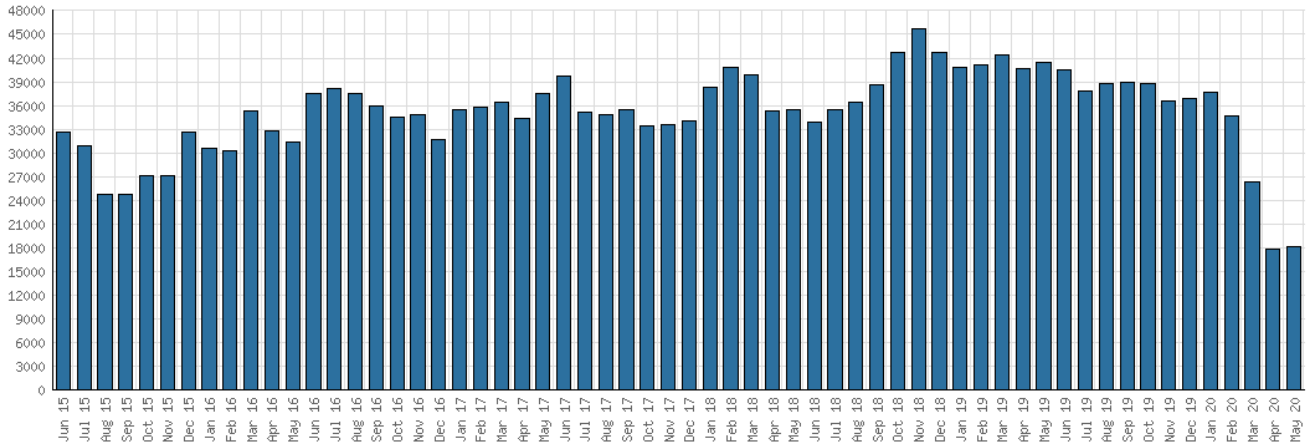
District Digital Usage



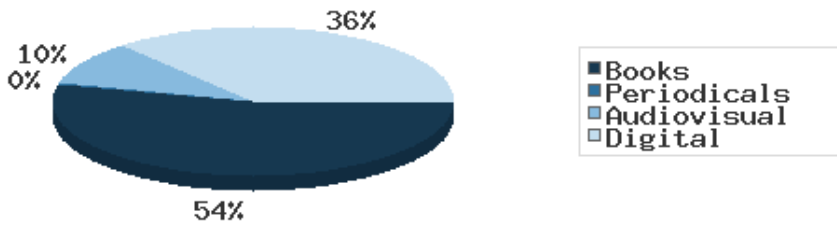
District Use of Library-Provided Computers



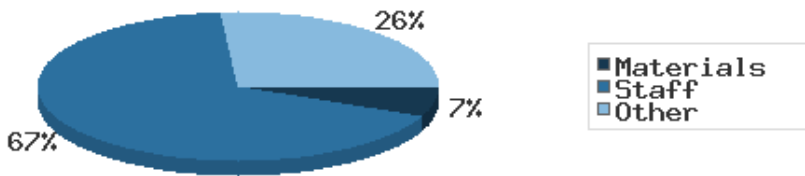
District One-Hour Sessions on Library Wifi



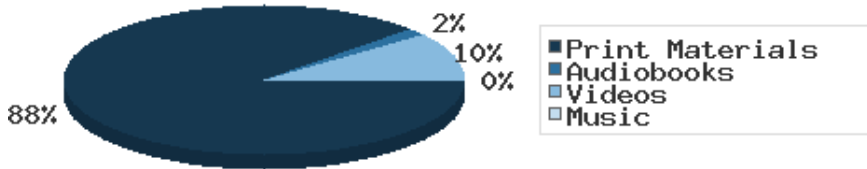
Year-to-Date Materials Expenditures



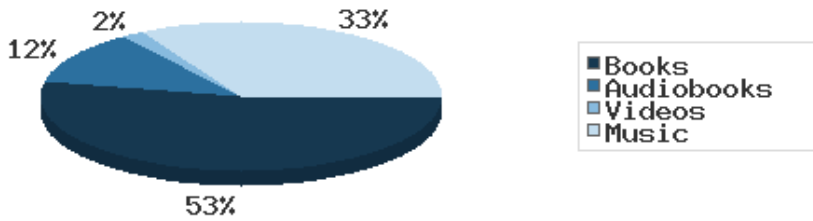
YTD Expenditures in all Categories



Physical Collection



Digital Collection



YTD Usage Breakdown of Digital Services

