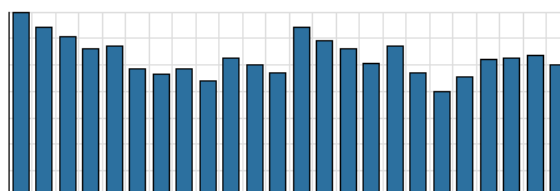


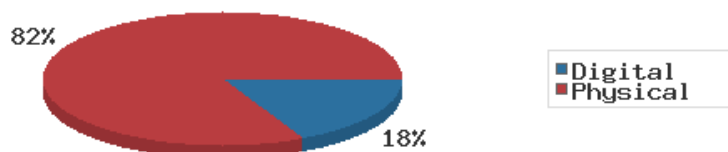
## Monthly Stats Brief Narrative

Through May 2019, the number of patrons entering our buildings decreased system-wide compared to this same time year-to-date the previous year. Combined physical and digital use of library materials slightly increased year-to-date compared to 2018. About 10% of our registered cardholders checked out a physical item this past month, while about 2% of registered cardholders checked out a digital item.

District Total Checkouts Over 24 Months



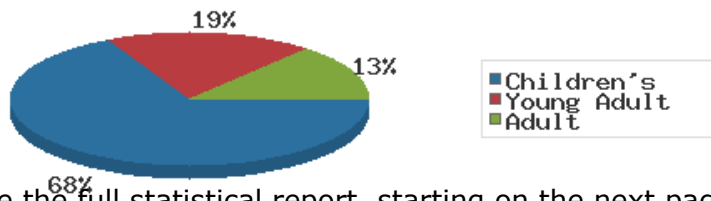
Digital vs. Physical Circulation YTD



Digital usage has comprised about 18% of total materials use year-to-date through May 2019, and digital usage somewhat increased from this time in 2018.

In May 2019, BDL patrons saved \$148,120.10 by checking out 12,319 physical items from the library. Our programming for all ages and our digital services further increase the library's value to the community, bringing the total estimated value to \$179,111.55.

Programs Offered in 2019 YTD



Compared to this time year-to-date 2018, the number of programs BDL offered has somewhat increased. Attendance at programs slightly decreased over this same period.

See the full statistical report, starting on the next page, for details and more graphs. The most up-to-date stats are always available online and interactive at <https://www.BranchDistrictLibrary.org/stats>.

## Attendance

May 2019

	BDL Monthly Total	BDL YTD	BDL Year End (Year-over-Year Change)				
			2018	2017	2016	2015	2014
			<b>Attendance</b>	13,950	62,680 (-18%)	191,866 (-1%)	193,922 (-4%)
<b>Hours Open</b>	807.50	4,580.50 (-12%)	12,312.00 (+13%)	10,869.15 (-0%)	10,877.50 (+25%)	8,703.00 (+61%)	5,395.00 (+3%)
<b>Number of Hours Scheduled Open Each Week (Tracking Since 1/2018)</b>	251.00		255.00	0.00	0.00	0.00	0.00

## Patrons

May 2019

	BDL Monthly Total	BDL YTD	BDL Year End (Year-over-Year Change)				
			2018	2017	2016	2015	2014
			<b>Population in our Service Area (Tracking Since 2018)</b>	46,926	45,326 (avg) (+0%)	44,926 (avg)	0 (avg)
<b>Library Card Holders</b>	20,420	20,325 (avg) (-13%)	20,166 (avg) (-21%)	25,685 (avg) (+3%)	24,899 (avg) (+4%)	23,974 (avg) (+5%)	22,879 (avg) (+5%)
<b>Patrons Who Checked Out a Physical Item</b>	2,137	2,071 (avg) (-0%)	1,896 (avg) (+0%)	1,887 (avg) (-7%)	2,030 (avg) (-2%)	2,069 (avg) (-2%)	2,109 (avg) (-10%)
<b>New Library Card Holders Added</b>	43	268 (-19%)	1,021 (+21%)	844 (-15%)	989 (-9%)	1,086 (-22%)	1,390 (+22%)
<b>In-House Holds Filled for Our Library Card Holders</b>	863	4,523 (-2%)	10,987 (-6%)	11,650 (+12%)	10,407 (+2%)	10,225 (+7%)	9,546 (-16%)
<b>Active Hoopla Users (Began 2016)</b>	297	294 (avg) (+25%)	262 (avg) (+39%)	189 (avg) (+47%)	129 (avg)	0 (avg)	0 (avg)
<b>Active OverDrive Users</b>	201	201 (avg) (+22%)	197 (avg) (+26%)	156 (avg) (+16%)	134 (avg) (-7%)	144 (avg) (+7%)	134 (avg) (+20%)

## Physical Collection

Tracking Item-Type Breakdown Since 8/2017

May 2019

	BDL Monthly Total	BDL YTD	BDL Year End (Year-over-Year Change)				
			2018	2017	2016	2015	2014
			<b>Physical Books and All other Print Materials in the Catalog</b>	100,117		100,253 (-0%)	100,293
<b>Physical Audiobooks in the Catalog</b>	1,853		1,881 (+2%)	1,852	0	0	0
<b>Physical Video Materials in the Catalog</b>	10,901		10,579 (+1%)	10,519	0	0	0
<b>Physical Music Recordings in the Catalog</b>	191		337 (-2%)	345	0	0	0
<b>TOTAL Physical Items in the Catalog</b>	<b>113,023</b>		<b>113,050 (+0%)</b>	<b>113,009 (-11%)</b>	<b>126,407 (-4%)</b>	<b>131,432 (+1%)</b>	<b>130,210 (+1%)</b>

## Digital Collection

Tracking Since 8/2017

May 2019

	BDL Monthly Total	BDL YTD	BDL Year End (Year-over-Year Change)				
			2018	2017	2016	2015	2014
			<b>Ebooks in All Digital Collections</b>	335,998		306,595 (+33%)	230,178
<b>Audiobooks in All Digital Collections</b>	74,419		71,995 (+36%)	52,833	0	0	0
<b>Video Materials in All Digital Collections</b>	15,199		14,229 (-10%)	15,767	0	0	0
<b>Music Recordings in All Digital Collections</b>	242,806		239,705 (-14%)	280,259	0	0	0
<b>TOTAL of All Digital Collections</b>	<b>668,422</b>		<b>632,524 (+9%)</b>	<b>579,037</b>	<b>0</b>	<b>0</b>	<b>0</b>

## Total Collection

Tracking Since 8/2017

May 2019

	BDL Monthly Total	BDL YTD	BDL Year End (Year-over-Year Change)				
			2018	2017	2016	2015	2014
Combined Physical Items	113,023		113,050 (+0%)	113,009 (-11%)	126,407 (-4%)	131,432 (+1%)	130,210 (+1%)
Combined Digital Collections	668,422		632,524 (+9%)	579,037	0	0	0
<b>TOTAL of all Collections</b>	<b>781,445</b>		<b>745,574 (+8%)</b>	<b>692,046 (+447%)</b>	<b>126,407 (-4%)</b>	<b>131,432 (+1%)</b>	<b>130,210 (+1%)</b>

## Use of Physical Items

May 2019

	BDL Monthly Total	BDL YTD	BDL Year End (Year-over-Year Change)				
			2018	2017	2016	2015	2014
Checkouts of Cataloged Items	8,987	45,072 (-0%)	113,128 (-6%)	120,916 (+2%)	118,595 (-3%)	121,841 (-1%)	123,074 (-11%)
Renewals of Cataloged Items	1,250	5,759 (+9%)	13,607 (-8%)	14,804 (-4%)	15,480 (+0%)	15,434 (-4%)	16,044 (-2%)
Items Used in the Library But Not Checked Out	307	2,000 (+134%)	2,803 (-8%)	3,050 (+126%)	1,351 (+7,011%)	19 (-68%)	60
Checkouts of Uncataloged Items	374	1,305 (-12%)	3,904 (+38%)	2,839 (-38%)	4,578 (+4%)	4,385 (-5%)	4,601 (-8%)
Requests from BDL Patrons for Items at Other MeLCat Libraries, Actually Fulfilled	839	4,570 (+11%)	9,777 (+20%)	8,169 (+15%)	7,112 (+16%)	6,118 (+8%)	5,677 (-10%)
Requests from Other MeLCat Libraries for Items at BDL, Actually Fulfilled	562	3,628 (+18%)	9,810 (+25%)	7,867 (+11%)	7,068 (+46%)	4,855 (-10%)	5,400 (-42%)
<b>TOTAL Use of Physical Items</b>	<b>12,319</b>	<b>62,334 (+4%)</b>	<b>153,029 (-3%)</b>	<b>157,645 (+2%)</b>	<b>154,184 (+1%)</b>	<b>152,652 (-1%)</b>	<b>154,856 (-12%)</b>

## Use of Digital Resources

May 2019

	BDL Monthly Total	BDL YTD	BDL Year End (Year-over-Year Change)				
			2018	2017	2016	2015	2014
OverDrive Checkouts	759	4,258 (+16%)	9,501 (+21%)	7,823 (+4%)	7,502 (+2%)	7,380 (+12%)	6,615 (+17%)
Hoopla Checkouts (Began 2016)	1,122	5,697 (+10%)	12,796 (+20%)	10,669 (+96%)	5,432	0	0
All Other Digital Services	788	3,712 (-4%)	9,572 (-72%)	34,047 (-46%)	62,788 (+38%)	45,565 (+203%)	15,031 (+26%)
<b>TOTAL Use of Digital Resources</b>	<b>2,669</b>	<b>13,667 (+8%)</b>	<b>31,869 (-39%)</b>	<b>52,539 (-31%)</b>	<b>75,722 (+43%)</b>	<b>52,945 (+145%)</b>	<b>21,646 (+23%)</b>

## Total Item Usage

May 2019

	BDL Monthly Total	BDL YTD	BDL Year End (Year-over-Year Change)				
			2018	2017	2016	2015	2014
Combined Checkouts of Physical Items	12,319	62,334 (+4%)	153,029 (-3%)	157,645 (+2%)	154,184 (+1%)	152,652 (-1%)	154,856 (-12%)
Combined Use of Digital Resources	2,669	13,667 (+8%)	31,869 (-39%)	52,539 (-31%)	75,722 (+43%)	52,945 (+145%)	21,646 (+23%)
<b>TOTAL Uses of All BDL Items</b>	<b>14,988</b>	<b>76,001 (+4%)</b>	<b>184,898 (-12%)</b>	<b>210,184 (-9%)</b>	<b>229,906 (+12%)</b>	<b>205,597 (+16%)</b>	<b>176,502 (-8%)</b>

## Cataloging

May 2019

	BDL Monthly Total	BDL YTD	BDL Year End (Year-over-Year Change)				
			2018	2017	2016	2015	2014
Physical Items Added to the Catalog	719	4,650 (-9%)	11,056 (+0%)	11,009 (-1%)	11,091 (+29%)	8,582 (+40%)	6,134 (+1%)
Physical Items Deleted from the Catalog	1,488	4,702 (-15%)	10,941 (-55%)	24,366 (+53%)	15,968 (+84%)	8,668 (+40%)	6,186 (+30%)

## Reference Questions

May 2019

	BDL Monthly Total	BDL YTD	BDL Year End (Year-over-Year Change)				
			2018	2017	2016	2015	2014
General Reference Questions in Person	904	3,136 (+13%)	6,641 (-12%)	7,537 (+20%)	6,285 (+124%)	2,806 (-0%)	2,809 (-22%)
Questions via Telephone Calls	344	1,645 (-10%)	3,866 (-24%)	5,079 (+10%)	4,622 (+60%)	2,885 (+0%)	2,872 (+18%)
Reference Questions Delivered Online	20	168 (+137%)	152 (-35%)	233 (-23%)	304 (+34%)	227 (+77%)	128 (+184%)
In-Person Questions on Computer or Internet Use	612	3,108 (+11%)	7,068 (-3%)	7,285 (+11%)	6,568 (+18%)	5,551 (+36%)	4,076 (+9%)
In-Person Questions about Our Online Databases	33	159 (-12%)	409 (+13%)	363 (+114%)	170 (+85%)	92 (-24%)	121 (-41%)
In-Person Tax Form Questions	3	314 (-38%)	518 (+5%)	493 (+4%)	473 (-18%)	579 (+3%)	560 (+5%)
<b>TOTAL of All Reference Questions</b>	<b>1,916</b>	<b>8,530 (+5%)</b>	<b>18,654 (-11%)</b>	<b>20,990 (+14%)</b>	<b>18,422 (+52%)</b>	<b>12,140 (+15%)</b>	<b>10,566 (-0%)</b>

## Notary Services

Began 9/2017 at Coldwater Only

May 2019

	BDL Monthly Total	BDL YTD	BDL Year End (Year-over-Year Change)				
			2018	2017	2016	2015	2014
Patrons Who Used our Free Notary Services	12	43 (+65%)	66 (+371%)	14	0	0	0
Documents Notarized	15	71 (+184%)	67 (+253%)	19	0	0	0

## MeLCat

May 2019

	BDL Monthly Total	BDL YTD	BDL Year End (Year-over-Year Change)				
			2018	2017	2016	2015	2014
Requests from BDL Patrons for Items at Other MeLCat Libraries	896	4,832 (+11%)	10,462 (+20%)	8,699 (+14%)	7,643 (+5%)	7,280 (+9%)	6,708 (-8%)
Requests from BDL Patrons for Items at Other MeLCat Libraries, Actually Fulfilled	839	4,570 (+11%)	9,777 (+20%)	8,169 (+15%)	7,112 (+16%)	6,118 (+8%)	5,677 (-10%)
Requests from Other MeLCat Libraries for Items at BDL	586	3,934 (+27%)	10,296 (+29%)	7,994 (+13%)	7,096 (+18%)	5,989 (-10%)	6,619 (-33%)
Requests from Other MeLCat Libraries for Items at BDL, Actually Fulfilled	562	3,628 (+18%)	9,810 (+25%)	7,867 (+11%)	7,068 (+46%)	4,855 (-10%)	5,400 (-42%)

**Programs Held**  
May 2019

	BDL Monthly Total	BDL YTD	BDL Year End (Year-over-Year Change)				
			2018	2017	2016	2015	2014
Juvenile Programs Held	55	340 (-10%)	730 (+1%)	720 (+19%)	604 (+5%)	575 (+19%)	482 (+3%)
Young Adult Programs Held	17	124 (-32%)	338 (+41%)	239 (+47%)	163 (+8%)	151 (+20%)	126 (+157%)
Adult Programs Held	25	82 (+26%)	136 (-7%)	146 (-34%)	220 (+40%)	157 (+26%)	125 (+44%)
Juvenile Summer Reading Events Held	0	0	114 (+20%)	95 (+7%)	89 (+6%)	84 (+8%)	78
Young Adult Summer Reading Events Held	1	1	49 (-14%)	57 (+97%)	29 (-66%)	85 (+183%)	30
Adult Summer Reading Events Held	0	0	3	0	3 (-40%)	5 (+25%)	4
Computer Classes Held	2	12	20 (-9%)	22 (+57%)	14 (-36%)	22 (-8%)	24
<b>TOTAL of All Programs</b>	<b>100</b>	<b>559 (-13%)</b>	<b>1,390 (+9%)</b>	<b>1,279 (+14%)</b>	<b>1,122 (+4%)</b>	<b>1,079 (+24%)</b>	<b>869 (+43%)</b>

**Program Attendance**  
May 2019

	BDL Monthly Total	BDL YTD	BDL Year End (Year-over-Year Change)				
			2018	2017	2016	2015	2014
Attendees at Juvenile Programs	1,365	6,912 (-7%)	15,725 (+2%)	15,351 (+48%)	10,371 (+23%)	8,415 (+7%)	7,857 (-11%)
Attendees at Young Adult Programs	82	827 (-59%)	3,218 (-15%)	3,806 (+276%)	1,011 (+14%)	884 (+38%)	641 (+36%)
Attendees at Adult Programs	214	808 (-8%)	1,970 (-0%)	1,979 (-3%)	2,048 (-5%)	2,157 (+65%)	1,310 (+18%)
Attendees at Juvenile Summer Reading Events	0	0	3,864 (+24%)	3,116 (-20%)	3,904 (+56%)	2,499 (-21%)	3,159
Attendees at Young Adult Summer Reading Events	3	3	333 (-50%)	671 (+127%)	295 (+14%)	259 (-16%)	307
Attendees at Adult Summer Reading Events	0	0	85	0	21 (-73%)	77 (-31%)	111
Attendees at Computer Classes	1	12	20 (-5%)	21 (+75%)	12 (-59%)	29 (+4%)	28
<b>TOTAL of All Program Attendance</b>	<b>1,665</b>	<b>8,562 (-17%)</b>	<b>25,215 (+1%)</b>	<b>24,944 (+41%)</b>	<b>17,662 (+23%)</b>	<b>14,320 (+7%)</b>	<b>13,413 (+28%)</b>

## Summer Reading Overview

May 2019

	BDL Monthly Total	BDL YTD	BDL Year End (Year-over-Year Change)				
			2018	2017	2016	2015	2014
Juveniles Signed Up for Summer Reading Program	0	0	747 (-35%)	1,153 (+19%)	967 (+13%)	859	0
Young Adults Signed up for Summer Reading Program	0	0	378 (-2%)	385 (+241%)	113 (-64%)	311	0
Adults Signed Up for Summer Reading Program	0	0	248 (+112%)	117 (+36%)	86 (+1%)	85	0
Juveniles who Completed Summer Reading Program	0	0	260 (-50%)	518 (+13%)	459 (-10%)	512	0
Young Adults who Completed Summer Reading Program	0	0	135 (-50%)	268 (+332%)	62 (-49%)	122	0
Adults who Completed Summer Reading Program	0	0	165 (+72%)	96 (+60%)	60 (+7%)	56	0
Juvenile Summer Reading Events Held	0	0	114 (+20%)	95 (+7%)	89 (+6%)	84 (+8%)	78
Young Adult Summer Reading Events Held	1	1	49 (-14%)	57 (+97%)	29 (-66%)	85 (+183%)	30
Adult Summer Reading Events Held	0	0	3	0	3 (-40%)	5 (+25%)	4
Attendees at Juvenile Summer Reading Events	0	0	3,864 (+24%)	3,116 (-20%)	3,904 (+56%)	2,499 (-21%)	3,159
Attendees at Young Adult Summer Reading Events	3	3	333 (-50%)	671 (+127%)	295 (+14%)	259 (-16%)	307
Attendees at Adult Summer Reading Events	0	0	85	0	21 (-73%)	77 (-31%)	111

## Summer Reading Program Signups

May 2019

	BDL Monthly Total	BDL YTD	BDL Year End (Year-over-Year Change)				
			2018	2017	2016	2015	2014
Juveniles Signed Up for Summer Reading Program	0	0	747 (-35%)	1,153 (+19%)	967 (+13%)	859	0
Young Adults Signed up for Summer Reading Program	0	0	378 (-2%)	385 (+241%)	113 (-64%)	311	0
Adults Signed Up for Summer Reading Program	0	0	248 (+112%)	117 (+36%)	86 (+1%)	85	0
<b>TOTAL Summer Reading Program Signups</b>	<b>0</b>	<b>0</b>	<b>1,373 (-17%)</b>	<b>1,655 (+42%)</b>	<b>1,166 (-7%)</b>	<b>1,255</b>	<b>0</b>

## Summer Reading Program Completions

May 2019

	BDL Monthly Total	BDL YTD	BDL Year End (Year-over-Year Change)				
			2018	2017	2016	2015	2014
Juveniles who Completed Summer Reading Program	0	0	260 (-50%)	518 (+13%)	459 (-10%)	512	0
Young Adults who Completed Summer Reading Program	0	0	135 (-50%)	268 (+332%)	62 (-49%)	122	0
Adults who Completed Summer Reading Program	0	0	165 (+72%)	96 (+60%)	60 (+7%)	56	0
<b>TOTAL Summer Reading Program Completions</b>	<b>0</b>	<b>0</b>	<b>560 (-37%)</b>	<b>882 (+52%)</b>	<b>581 (-16%)</b>	<b>690</b>	<b>0</b>

## Library-Provided Computer Services

May 2019

	BDL Monthly Total	BDL YTD	BDL Year End (Year-over-Year Change)				
			2018	2017	2016	2015	2014
One-hour sessions on Library Wifi	41,522	206,411 (+9%)	465,219 (+9%)	425,714 (+4%)	410,437 (+17%)	351,423 (+18%)	298,098 (+37%)
Desktop, Laptop, and Tablet Computers Available for Public Use	88		89 (+22%)	73	73	73	73
Sessions on Library-Provided Computers	2,734	12,532 (-25%)	45,687 (+3%)	44,181 (+6%)	41,513 (-11%)	46,405 (+6%)	43,756 (-6%)
Hours Library-Provided Computers Used (Tracking Since 2018)	1,959.42	8,856.71 (+6%)	24,701.55	0.00	0.00	0.00	0.00
Desktop, Laptop, and Tablet Computers Available for Staff Use	52		50 (+22%)	41	41	41	41

## Website Stats

May 2019

	BDL Monthly Total	BDL YTD	BDL Year End (Year-over-Year Change)				
			2018	2017	2016	2015	2014
Monthly Website Sessions	4,802	23,302 (+28%)	45,594 (-38%)	73,326 (-2%)	75,139 (+3%)	72,706 (+6%)	68,773 (-22%)
Monthly Website Page Views	10,930	54,581 (+16%)	118,634 (-33%)	177,799 (-2%)	182,084 (+7%)	169,630 (+4%)	163,277 (-8%)

## Faxes, Prints, and Sales

May 2019

	BDL Monthly Total	BDL YTD	BDL Year End (Year-over-Year Change)				
			2018	2017	2016	2015	2014
Fax Pages Received	75	155 (-7%)	419 (+61%)	260 (+19%)	219 (+27%)	173 (+3%)	168 (+20%)
Fax Pages Sent	805	3,816 (+5%)	9,249 (+138%)	3,879 (+123%)	1,741 (-7%)	1,882 (+39%)	1,353 (+1%)
Free Prints for Job Seekers	171	1,238 (-12%)	3,631 (+16%)	3,128 (+9%)	2,878 (+23%)	2,335 (-23%)	3,024 (-21%)
Black and White Patron Prints (Tracking Since 6/2016)	5,419	30,897 (-18%)	81,016 (+7%)	75,606 (+113%)	35,561	0	0
Color Patron Prints (Tracking Since 6/2016)	851	4,686 (+7%)	12,285 (+20%)	10,253 (+154%)	4,036	0	0
Flash Drives Sold (Tracking Since 6/2016)	3	17	41 (-27%)	56 (+4%)	54	0	0
Earbuds Sold (Tracking Since 6/2016)	24	180 (-6%)	538 (+29%)	416 (+151%)	166	0	0

## Fines and Fees

Overdue Fines Dropped in 2017

May 2019

	BDL Monthly Total	BDL YTD	BDL Year End (Year-over-Year Change)				
			2018	2017	2016	2015	2014
Fines and Fees Payments Received	\$ 227.49	\$ 1,310.02 (+16%)	\$ 2,412.73 (-68%)	\$ 7,628.31 (-24%)	\$ 10,062.96 (-30%)	\$ 14,448.76 (-3%)	\$ 14,827.36 (-4%)
Outstanding Fines and Fees	\$ 54,288.88		55,850.27 (-34%)	84,232.33 (-63%)	228,102.90 (+3%)	221,076.26 (+5%)	209,842.19 (+4%)

**Debt Collections**  
 Unique Management Services, Inc.  
 Tracking Since 2014

May 2019

	BDL Monthly Total	BDL YTD	BDL Year End (Year-over-Year Change)				
			2018	2017	2016	2015	2014
Fine Payments as a Result of Collection Agency's Efforts	\$ 0.00	\$ 268.00 (+59%)	\$ 4,183.45 (+1,727%)	\$ 229.00 (-76%)	\$ 947.13 (+16%)	\$ 818.48 (+1%)	\$ 809.51
Library Materials Returned as a Result of Collection Agency's Efforts	\$ 0.00	\$ 0.00	\$ 462.00 (-48%)	\$ 888.95 (-33%)	\$ 1,317.93 (-2%)	\$ 1,346.89 (-28%)	\$ 1,864.69
What We Paid Collection Agency for Their Services	\$ 0.00	\$ 134.10 (-4%)	\$ 528.66 (-5%)	\$ 558.08 (-45%)	\$ 1,022.23 (-3%)	\$ 1,051.42 (+40%)	\$ 753.88

**Value to Our Service Area**

Visit <https://www.BranchDistrictLibrary.org/value>  
 to learn how we determine these numbers.

May 2019

	BDL Monthly Total	BDL YTD	BDL Year End (Year-over-Year Change)				
			2018	2017	2016	2015	2014
Value from Physical Item Checkouts	\$ 148,120.10	\$ 739,843.30 (-3%)	\$ 1,888,907.75 (-12%)	\$ 2,135,671.28 (+0%)	\$ 2,132,387.79 (-2%)	\$ 2,167,140.68 (+0%)	\$ 2,167,024.48 (-9%)
Value from Attending Programs (Tracking Since 1/2018)	\$ 10,565.00	\$ 46,645.00 (-9%)	\$ 125,795.00	\$ 0.00	\$ 0.00	\$ 0.00	\$ 0.00
Value from Fax Service (Tracking Since 1/2018)	\$ 880.00	\$ 3,971.00 (+5%)	\$ 9,668.00	\$ 0.00	\$ 0.00	\$ 0.00	\$ 0.00
Value from Employment Prints (Tracking Since 1/2018)	\$ 25.65	\$ 185.70 (-12%)	\$ 544.65	\$ 0.00	\$ 0.00	\$ 0.00	\$ 0.00
Value from Notary Services (Tracking Since 1/2018)	\$ 60.00	\$ 215.00 (+65%)	\$ 330.00	\$ 0.00	\$ 0.00	\$ 0.00	\$ 0.00
Value from Digital Services (Tracking Since 1/2018)	\$ 10,676.00	\$ 54,668.00 (+8%)	\$ 127,476.00	\$ 0.00	\$ 0.00	\$ 0.00	\$ 0.00
Value from Using Library Computers (Tracking Since 1/2018)	\$ 5,878.26	\$ 26,570.13 (+6%)	\$ 74,104.66	\$ 0.00	\$ 0.00	\$ 0.00	\$ 0.00
Value from Using Library Wifi (Tracking Since 1/2018)	\$ 2,906.54	\$ 14,448.77 (+9%)	\$ 32,565.33	\$ 0.00	\$ 0.00	\$ 0.00	\$ 0.00
<b>TOTAL Value of Free Library Services</b>	<b>\$ 179,111.55</b>	<b>\$ 886,546.90 (-2%)</b>	<b>\$ 2,259,391.39 (+6%)</b>	<b>\$ 2,135,671.28 (+0%)</b>	<b>\$ 2,132,387.79 (-2%)</b>	<b>\$ 2,167,140.68 (+0%)</b>	<b>\$ 2,167,024.48 (-9%)</b>



## Materials Expenditures

Tracking since 2018

May 2019

	BDL Monthly Total	BDL YTD	BDL Year End (Year-over-Year Change)				
			2018	2017	2016	2015	2014
Amount Spent on Books	\$ 7,209.34	\$ 43,303.10 (+7%)	\$ 93,763.50	\$ 0.00	\$ 0.00	\$ 0.00	\$ 0.00
Amount Spent on Periodicals	\$ 108.50	\$ 365.50 (-46%)	\$ 7,085.59	\$ 0.00	\$ 0.00	\$ 0.00	\$ 0.00
Amount Spent on Audiovisual Materials	\$ 1,118.40	\$ 6,519.67 (-23%)	\$ 17,998.47	\$ 0.00	\$ 0.00	\$ 0.00	\$ 0.00
Amount Spent on Digital Resources	\$ 2,476.91	\$ 11,995.83 (-11%)	\$ 43,798.90	\$ 0.00	\$ 0.00	\$ 0.00	\$ 0.00
<b>TOTAL Spent on All Library Materials</b>	<b>\$ 10,913.15</b>	<b>\$ 62,184.10 (-1%)</b>	<b>\$ 162,646.46</b>	<b>\$ 0.00</b>	<b>\$ 0.00</b>	<b>\$ 0.00</b>	<b>\$ 0.00</b>

## Other Expenditures

Tracking since 2018

May 2019

	BDL Monthly Total	BDL YTD	BDL Year End (Year-over-Year Change)				
			2018	2017	2016	2015	2014
Total Materials Expenditures	\$ 10,913.15	\$ 62,184.10 (-1%)	\$ 162,646.46	\$ 0.00	\$ 0.00	\$ 0.00	\$ 0.00
Total Staff Expenditures	\$ 113,399.92	\$ 588,176.43 (+3%)	\$ 1,469,560.33	\$ 0.00	\$ 0.00	\$ 0.00	\$ 0.00
Expenditures in other categories	\$ 44,502.75	\$ 129,879.11 (-29%)	\$ 422,747.74	\$ 0.00	\$ 0.00	\$ 0.00	\$ 0.00
<b>TOTAL Expenditures in all Categories</b>	<b>\$ 195,026.92</b>	<b>\$ 806,450.84 (-1%)</b>	<b>\$ 2,054,954.53</b>	<b>\$ 0.00</b>	<b>\$ 0.00</b>	<b>\$ 0.00</b>	<b>\$ 0.00</b>

## Staffing

May 2019

	BDL Monthly Total	BDL YTD	BDL Year End (Year-over-Year Change)				
			2018	2017	2016	2015	2014
Total BDL Staff	36	38 (avg) (-3%)	40 (avg) (+5%)	37 (avg) (+9%)	34 (avg) (+17%)	29 (avg) (-3%)	30 (avg) (-6%)
BDL Staff with MLS Degree	4	5 (avg) (-17%)	6 (avg) (+20%)	5 (avg) (+150%)	3 (avg)	2 (avg)	2 (avg) (-33%)
Worked Full-Time Equivalents	24.18	26.61 (avg) (-4%)	26.92 (avg) (+8%)	24.91 (avg) (+41%)	17.90 (avg) (+13%)	15.75 (avg) (-6%)	16.81 (avg) (-16%)
Hours of Specialized Training for Staff (Tracking Since 1/2019)	2	104	0	0	0	0	0
Hours Volunteers Worked at the Library (Tracking Since 1/2019)	39	497	0	0	0	0	0

## Outreach Services

Began 2018

May 2019

	BDL Monthly Total	BDL YTD	BDL Year End (Year-over-Year Change)				
			2018	2017	2016	2015	2014
Number of Patrons Served by Outreach Services	2	50 (+61%)	76 (+2,433%)	3	0	0	0
Number of Items Delivered to Outreach Patrons	18	153 (-34%)	606 (+2,231%)	26	0	0	0

### Coldwater Branch Heritage Room

Stats part of Coldwater Branch totals above; shown here for convenience.

May 2019

	Heritage Room	BDL YTD	BDL Year End (Year-over-Year Change)				
			2018	2017	2016	2015	2014
Heritage Room Attendance	50	183 (-44%)	736 (+12%)	658 (-7%)	705 (+51%)	468 (+50%)	312
In-Person Reference Questions	30	156 (-47%)	708 (+29%)	550 (+664%)	72 (+140%)	30 (-27%)	41 (+71%)
Reference Telephone Calls	18	94 (-39%)	277 (-36%)	433 (+15%)	376 (+83%)	206 (+145%)	84
Online Reference Questions	2	29 (-12%)	60 (-5%)	63 (-24%)	83 (+8%)	77 (+79%)	43

### Coldwater Branch Kids' Place

Stats part of Coldwater Branch totals above; shown here for convenience.

Tracking separately since April 2019.

May 2019

	Kids' Place	BDL YTD	BDL Year End (Year-over-Year Change)				
			2018	2017	2016	2015	2014
Kids' Place Attendance	973	1,791	0	0	0	0	0
In-Person Reference Questions	98	193	0	0	0	0	0
Reference Telephone Calls	34	63	0	0	0	0	0
Online Reference Questions	0	0	0	0	0	0	0

### Coldwater Branch Teen Space

Stats part of Coldwater Branch totals above; shown here for convenience.

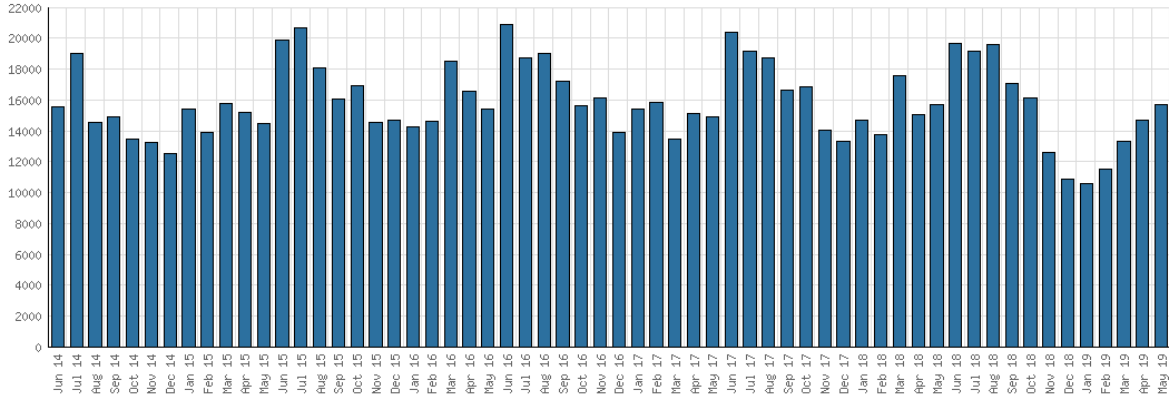
Tracking separately since April 2019.

May 2019

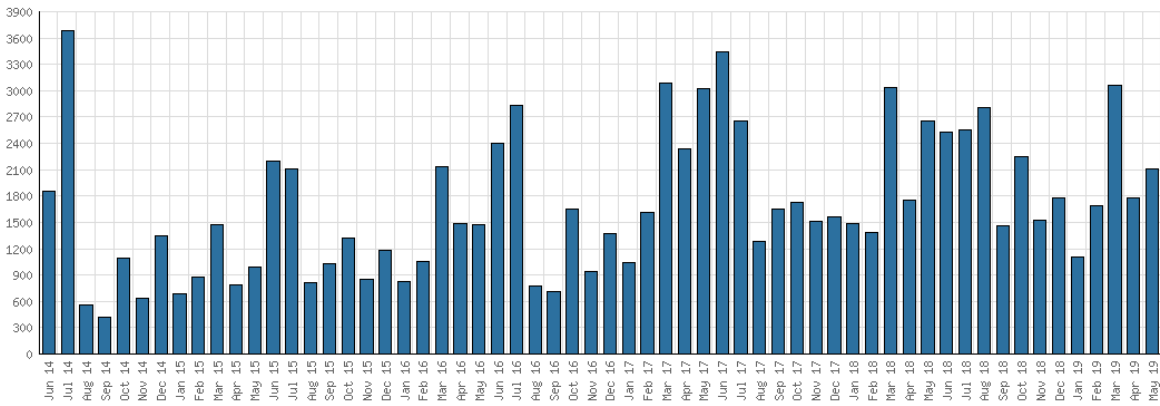
	Teen Space	BDL YTD	BDL Year End (Year-over-Year Change)				
			2018	2017	2016	2015	2014
Teen Space Attendance	798	1,394	0	0	0	0	0
In-Person Reference Questions	18	26	0	0	0	0	0
Reference Telephone Calls	0	0	0	0	0	0	0
Online Reference Questions	0	0	0	0	0	0	0

**Selected Graphs**  
5-year Monthly Trends

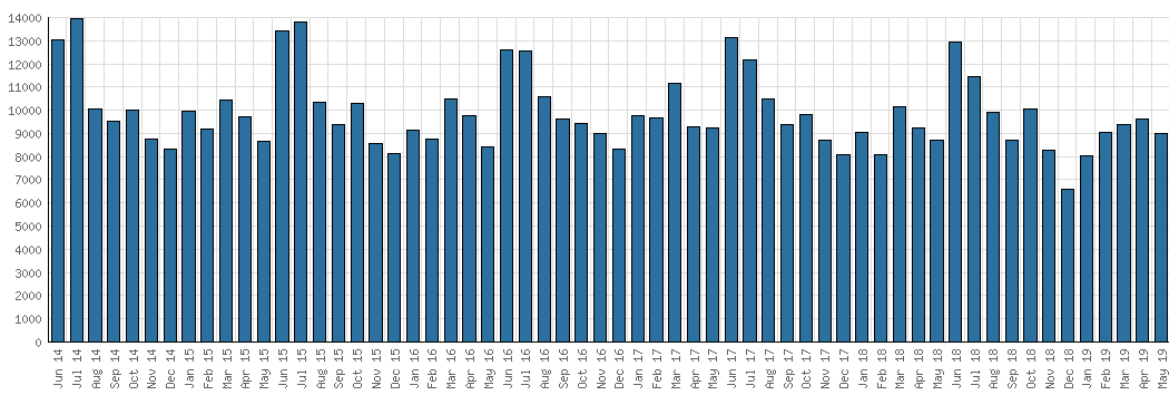
**District Attendance**



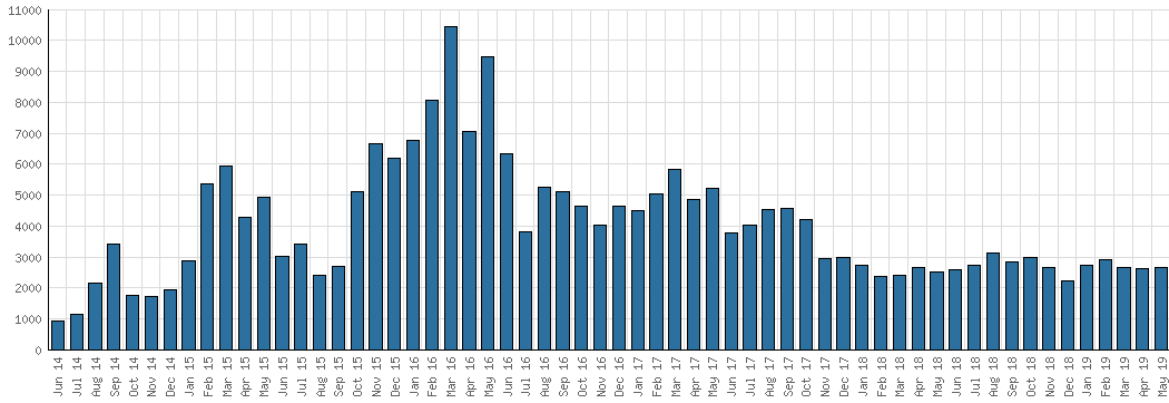
**District Program Attendance**



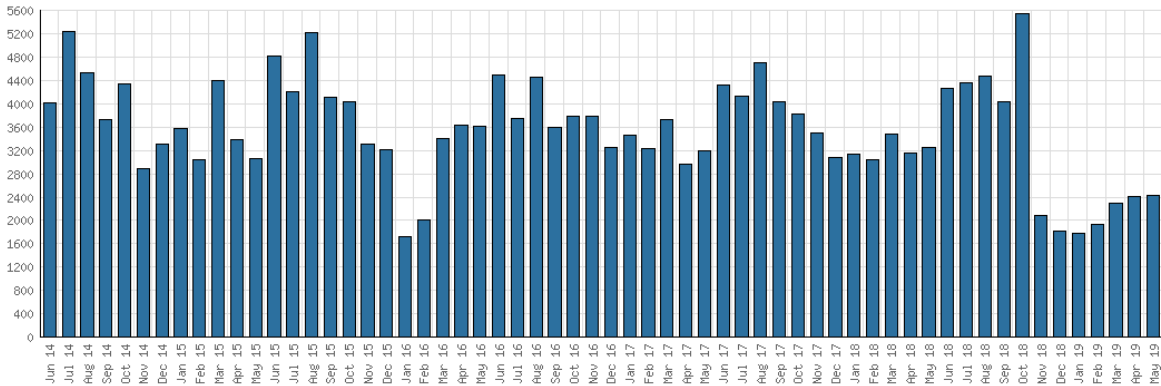
**District Physical Checkouts**



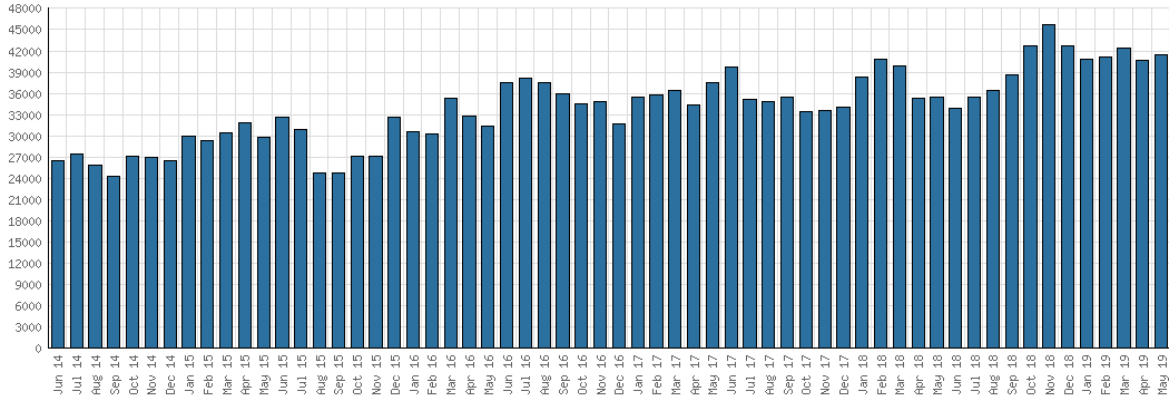
District Digital Usage



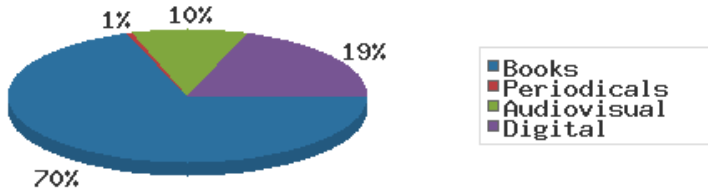
District Use of Library-Provided Computers



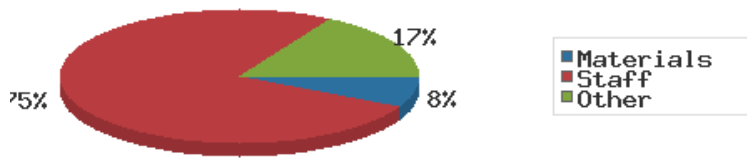
District One-Hour Sessions on Library Wifi



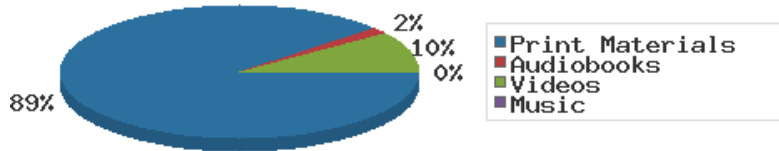
Year-to-Date Materials Expenditures



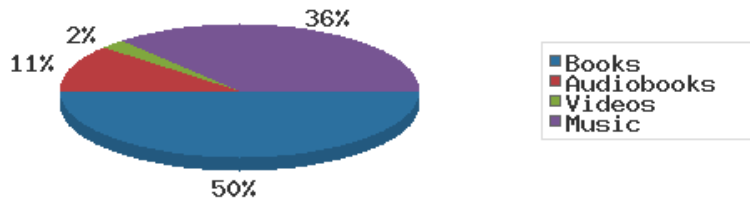
YTD Expenditures in all Categories



Physical Collection



Digital Collection



YTD Usage Breakdown of Digital Services

