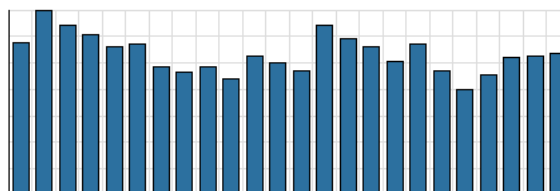


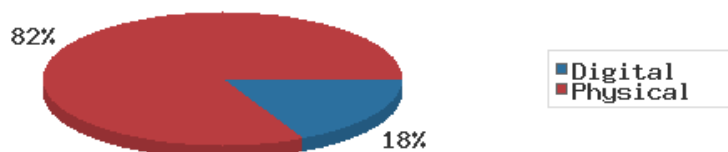
Monthly Stats Brief Narrative

Through April 2019, the number of patrons entering our buildings decreased system-wide compared to this same time year-to-date the previous year. Combined physical and digital use of library materials slightly increased year-to-date compared to 2018. About 11% of our registered cardholders checked out a physical item this past month, while about 2% of registered cardholders checked out a digital item.

District Total Checkouts Over 24 Months



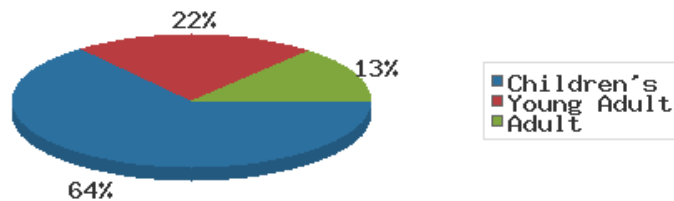
Digital vs. Physical Circulation YTD



Digital usage has comprised about 18% of total materials use year-to-date through April 2019, and digital usage somewhat increased from this time in 2018.

In April 2019, BDL patrons saved \$153,354.30 by checking out 13,401 physical items from the library. Our programming for all ages and our digital services further increase the library's value to the community, bringing the total estimated value to \$182,463.21.

Programs Offered in 2019 YTD



Compared to this time year-to-date 2018, the number of programs BDL offered has slightly decreased. Attendance at programs stayed about the same over this same period.

Note that starting this month, data are available for the Coldwater Branch Kids'

Place and Teen Space breakout tables.

See the full statistical report, starting on the next page, for details and more graphs. The most up-to-date stats are always available online and interactive at <https://www.BranchDistrictLibrary.org/stats>.

Attendance

April 2019

	BDL Monthly Total	BDL YTD	BDL Year End (Year-over-Year Change)				
			2018	2017	2016	2015	2014
			Attendance	13,253	48,730 (-20%)	191,866 (-1%)	193,922 (-4%)
Hours Open	1,006.00	3,773.00 (-8%)	12,312.00 (+13%)	10,869.15 (-0%)	10,877.50 (+25%)	8,703.00 (+61%)	5,395.00 (+3%)
Number of Hours Scheduled Open Each Week (Tracking Since 1/2018)	251.00		255.00	0.00	0.00	0.00	0.00

Patrons

April 2019

	BDL Monthly Total	BDL YTD	BDL Year End (Year-over-Year Change)				
			2018	2017	2016	2015	2014
			Population in our Service Area (Tracking Since 2018)	44,926	44,926 (avg) (-0%)	44,926 (avg)	0 (avg)
Library Card Holders	20,376	20,301 (avg) (-16%)	20,166 (avg) (-21%)	25,685 (avg) (+3%)	24,899 (avg) (+4%)	23,974 (avg) (+5%)	22,879 (avg) (+5%)
Patrons Who Checked Out a Physical Item	2,142	2,055 (avg) (-1%)	1,896 (avg) (+0%)	1,887 (avg) (-7%)	2,030 (avg) (-2%)	2,069 (avg) (-2%)	2,109 (avg) (-10%)
New Library Card Holders Added	52	225 (-11%)	1,021 (+21%)	844 (-15%)	989 (-9%)	1,086 (-22%)	1,390 (+22%)
In-House Holds Filled for Our Library Card Holders	933	3,660 (-5%)	10,987 (-6%)	11,650 (+12%)	10,407 (+2%)	10,225 (+7%)	9,546 (-16%)
Active Hoopla Users (Began 2016)	292	293 (avg) (+24%)	262 (avg) (+39%)	189 (avg) (+47%)	129 (avg)	0 (avg)	0 (avg)
Active OverDrive Users	194	202 (avg) (+20%)	197 (avg) (+26%)	156 (avg) (+16%)	134 (avg) (-7%)	144 (avg) (+7%)	134 (avg) (+20%)

Physical Collection

Tracking Item-Type Breakdown Since 8/2017

April 2019

	BDL Monthly Total	BDL YTD	BDL Year End (Year-over-Year Change)				
			2018	2017	2016	2015	2014
			Physical Books and All other Print Materials in the Catalog	100,837		100,253 (-0%)	100,293
Physical Audiobooks in the Catalog	1,840		1,881 (+2%)	1,852	0	0	0
Physical Video Materials in the Catalog	10,849		10,579 (+1%)	10,519	0	0	0
Physical Music Recordings in the Catalog	254		337 (-2%)	345	0	0	0
TOTAL Physical Items in the Catalog	113,780		113,050 (+0%)	113,009 (-11%)	126,407 (-4%)	131,432 (+1%)	130,210 (+1%)

Digital Collection

Tracking Since 8/2017

April 2019

	BDL Monthly Total	BDL YTD	BDL Year End (Year-over-Year Change)				
			2018	2017	2016	2015	2014
			Ebooks in All Digital Collections	332,218		306,595 (+33%)	230,178
Audiobooks in All Digital Collections	72,167		71,995 (+36%)	52,833	0	0	0
Video Materials in All Digital Collections	241,218		14,229 (-10%)	15,767	0	0	0
Music Recordings in All Digital Collections	239,053		239,705 (-14%)	280,259	0	0	0
TOTAL of All Digital Collections	884,656		632,524 (+9%)	579,037	0	0	0

Total Collection

Tracking Since 8/2017

April 2019

	BDL Monthly Total	BDL YTD	BDL Year End (Year-over-Year Change)				
			2018	2017	2016	2015	2014
Combined Physical Items	113,780		113,050 (+0%)	113,009 (-11%)	126,407 (-4%)	131,432 (+1%)	130,210 (+1%)
Combined Digital Collections	884,656		632,524 (+9%)	579,037	0	0	0
TOTAL of all Collections	998,436		745,574 (+8%)	692,046 (+447%)	126,407 (-4%)	131,432 (+1%)	130,210 (+1%)

Use of Physical Items

April 2019

	BDL Monthly Total	BDL YTD	BDL Year End (Year-over-Year Change)				
			2018	2017	2016	2015	2014
Checkouts of Cataloged Items	9,635	36,085 (-1%)	113,128 (-6%)	120,916 (+2%)	118,595 (-3%)	121,841 (-1%)	123,074 (-11%)
Renewals of Cataloged Items	1,364	4,509 (+9%)	13,607 (-8%)	14,804 (-4%)	15,480 (+0%)	15,434 (-4%)	16,044 (-2%)
Items Used in the Library But Not Checked Out	488	1,693 (+194%)	2,803 (-8%)	3,050 (+126%)	1,351 (+7,011%)	19 (-68%)	60
Checkouts of Uncataloged Items	185	931 (-28%)	3,904 (+38%)	2,839 (-38%)	4,578 (+4%)	4,385 (-5%)	4,601 (-8%)
Requests from BDL Patrons for Items at Other MeLCat Libraries, Actually Fulfilled	855	3,731 (+10%)	9,777 (+20%)	8,169 (+15%)	7,112 (+16%)	6,118 (+8%)	5,677 (-10%)
Requests from Other MeLCat Libraries for Items at BDL, Actually Fulfilled	874	3,066 (+19%)	9,810 (+25%)	7,867 (+11%)	7,068 (+46%)	4,855 (-10%)	5,400 (-42%)
TOTAL Use of Physical Items	13,401	50,015 (+3%)	153,029 (-3%)	157,645 (+2%)	154,184 (+1%)	152,652 (-1%)	154,856 (-12%)

Use of Digital Resources

April 2019

	BDL Monthly Total	BDL YTD	BDL Year End (Year-over-Year Change)				
			2018	2017	2016	2015	2014
OverDrive Checkouts	742	3,499 (+22%)	9,501 (+21%)	7,823 (+4%)	7,502 (+2%)	7,380 (+12%)	6,615 (+17%)
Hoopla Checkouts (Began 2016)	1,159	4,575 (+9%)	12,796 (+20%)	10,669 (+96%)	5,432	0	0
All Other Digital Services	745	2,924 (-6%)	9,572 (-72%)	34,047 (-46%)	62,788 (+38%)	45,565 (+203%)	15,031 (+26%)
TOTAL Use of Digital Resources	2,646	10,998 (+8%)	31,869 (-39%)	52,539 (-31%)	75,722 (+43%)	52,945 (+145%)	21,646 (+23%)

Total Item Usage

April 2019

	BDL Monthly Total	BDL YTD	BDL Year End (Year-over-Year Change)				
			2018	2017	2016	2015	2014
Combined Checkouts of Physical Items	13,401	50,015 (+3%)	153,029 (-3%)	157,645 (+2%)	154,184 (+1%)	152,652 (-1%)	154,856 (-12%)
Combined Use of Digital Resources	2,646	10,998 (+8%)	31,869 (-39%)	52,539 (-31%)	75,722 (+43%)	52,945 (+145%)	21,646 (+23%)
TOTAL Uses of All BDL Items	16,047	61,013 (+4%)	184,898 (-12%)	210,184 (-9%)	229,906 (+12%)	205,597 (+16%)	176,502 (-8%)

Cataloging

April 2019

	BDL Monthly Total	BDL YTD	BDL Year End (Year-over-Year Change)				
			2018	2017	2016	2015	2014
Physical Items Added to the Catalog	974	3,931 (-5%)	11,056 (+0%)	11,009 (-1%)	11,091 (+29%)	8,582 (+40%)	6,134 (+1%)
Physical Items Deleted from the Catalog	1,250	3,214 (-34%)	10,941 (-55%)	24,366 (+53%)	15,968 (+84%)	8,668 (+40%)	6,186 (+30%)

Reference Questions

April 2019

	BDL Monthly Total	BDL YTD	BDL Year End (Year-over-Year Change)				
			2018	2017	2016	2015	2014
General Reference Questions in Person	644	2,230 (-1%)	6,641 (-12%)	7,537 (+20%)	6,285 (+124%)	2,806 (-0%)	2,809 (-22%)
Questions via Telephone Calls	315	1,297 (-14%)	3,866 (-24%)	5,079 (+10%)	4,622 (+60%)	2,885 (+0%)	2,872 (+18%)
Reference Questions Delivered Online	67	148 (+151%)	152 (-35%)	233 (-23%)	304 (+34%)	227 (+77%)	128 (+184%)
In-Person Questions on Computer or Internet Use	695	2,496 (+11%)	7,068 (-3%)	7,285 (+11%)	6,568 (+18%)	5,551 (+36%)	4,076 (+9%)
In-Person Questions about Our Online Databases	56	126 (-21%)	409 (+13%)	363 (+114%)	170 (+85%)	92 (-24%)	121 (-41%)
In-Person Tax Form Questions	55	311 (-38%)	518 (+5%)	493 (+4%)	473 (-18%)	579 (+3%)	560 (+5%)
TOTAL of All Reference Questions	1,832	6,608 (-2%)	18,654 (-11%)	20,990 (+14%)	18,422 (+52%)	12,140 (+15%)	10,566 (-0%)

Notary Services

Began 9/2017 at Coldwater Only

April 2019

	BDL Monthly Total	BDL YTD	BDL Year End (Year-over-Year Change)				
			2018	2017	2016	2015	2014
Patrons Who Used our Free Notary Services	14	31 (+63%)	66 (+371%)	14	0	0	0
Documents Notarized	18	56 (+211%)	67 (+253%)	19	0	0	0

MeLCat

April 2019

	BDL Monthly Total	BDL YTD	BDL Year End (Year-over-Year Change)				
			2018	2017	2016	2015	2014
Requests from BDL Patrons for Items at Other MeLCat Libraries	898	3,936 (+9%)	10,462 (+20%)	8,699 (+14%)	7,643 (+5%)	7,280 (+9%)	6,708 (-8%)
Requests from BDL Patrons for Items at Other MeLCat Libraries, Actually Fulfilled	855	3,731 (+10%)	9,777 (+20%)	8,169 (+15%)	7,112 (+16%)	6,118 (+8%)	5,677 (-10%)
Requests from Other MeLCat Libraries for Items at BDL	897	3,348 (+27%)	10,296 (+29%)	7,994 (+13%)	7,096 (+18%)	5,989 (-10%)	6,619 (-33%)
Requests from Other MeLCat Libraries for Items at BDL, Actually Fulfilled	874	3,066 (+19%)	9,810 (+25%)	7,867 (+11%)	7,068 (+46%)	4,855 (-10%)	5,400 (-42%)

Programs Held

April 2019

	BDL Monthly Total	BDL YTD	BDL Year End (Year-over-Year Change)				
			2018	2017	2016	2015	2014
Juvenile Programs Held	47	285 (-6%)	730 (+1%)	720 (+19%)	604 (+5%)	575 (+19%)	482 (+3%)
Young Adult Programs Held	30	107 (-33%)	338 (+41%)	239 (+47%)	163 (+8%)	151 (+20%)	126 (+157%)
Adult Programs Held	18	57 (+8%)	136 (-7%)	146 (-34%)	220 (+40%)	157 (+26%)	125 (+44%)
Juvenile Summer Reading Events Held	0	0	114 (+20%)	95 (+7%)	89 (+6%)	84 (+8%)	78
Young Adult Summer Reading Events Held	0	0	49 (-14%)	57 (+97%)	29 (-66%)	85 (+183%)	30
Adult Summer Reading Events Held	0	0	3	0	3 (-40%)	5 (+25%)	4
Computer Classes Held	0	10 (-9%)	20 (-9%)	22 (+57%)	14 (-36%)	22 (-8%)	24
TOTAL of All Programs	95	459 (-13%)	1,390 (+9%)	1,279 (+14%)	1,122 (+4%)	1,079 (+24%)	869 (+43%)

Program Attendance

April 2019

	BDL Monthly Total	BDL YTD	BDL Year End (Year-over-Year Change)				
			2018	2017	2016	2015	2014
Attendees at Juvenile Programs	702	5,547 (-6%)	15,725 (+2%)	15,351 (+48%)	10,371 (+23%)	8,415 (+7%)	7,857 (-11%)
Attendees at Young Adult Programs	183	745 (-30%)	3,218 (-15%)	3,806 (+276%)	1,011 (+14%)	884 (+38%)	641 (+36%)
Attendees at Adult Programs	163	594 (-15%)	1,970 (-0%)	1,979 (-3%)	2,048 (-5%)	2,157 (+65%)	1,310 (+18%)
Attendees at Juvenile Summer Reading Events	0	0	3,864 (+24%)	3,116 (-20%)	3,904 (+56%)	2,499 (-21%)	3,159
Attendees at Young Adult Summer Reading Events	0	0	333 (-50%)	671 (+127%)	295 (+14%)	259 (-16%)	307
Attendees at Adult Summer Reading Events	0	0	85	0	21 (-73%)	77 (-31%)	111
Attendees at Computer Classes	0	11	20 (-5%)	21 (+75%)	12 (-59%)	29 (+4%)	28
TOTAL of All Program Attendance	1,048	6,897 (-10%)	25,215 (+1%)	24,944 (+41%)	17,662 (+23%)	14,320 (+7%)	13,413 (+28%)

Summer Reading Overview

April 2019

	BDL Monthly Total	BDL YTD	BDL Year End (Year-over-Year Change)				
			2018	2017	2016	2015	2014
Juveniles Signed Up for Summer Reading Program	0	0	747 (-35%)	1,153 (+19%)	967 (+13%)	859	0
Young Adults Signed up for Summer Reading Program	0	0	378 (-2%)	385 (+241%)	113 (-64%)	311	0
Adults Signed Up for Summer Reading Program	0	0	248 (+112%)	117 (+36%)	86 (+1%)	85	0
Juveniles who Completed Summer Reading Program	0	0	260 (-50%)	518 (+13%)	459 (-10%)	512	0
Young Adults who Completed Summer Reading Program	0	0	135 (-50%)	268 (+332%)	62 (-49%)	122	0
Adults who Completed Summer Reading Program	0	0	165 (+72%)	96 (+60%)	60 (+7%)	56	0
Juvenile Summer Reading Events Held	0	0	114 (+20%)	95 (+7%)	89 (+6%)	84 (+8%)	78
Young Adult Summer Reading Events Held	0	0	49 (-14%)	57 (+97%)	29 (-66%)	85 (+183%)	30
Adult Summer Reading Events Held	0	0	3	0	3 (-40%)	5 (+25%)	4
Attendees at Juvenile Summer Reading Events	0	0	3,864 (+24%)	3,116 (-20%)	3,904 (+56%)	2,499 (-21%)	3,159
Attendees at Young Adult Summer Reading Events	0	0	333 (-50%)	671 (+127%)	295 (+14%)	259 (-16%)	307
Attendees at Adult Summer Reading Events	0	0	85	0	21 (-73%)	77 (-31%)	111

Summer Reading Program Signups

April 2019

	BDL Monthly Total	BDL YTD	BDL Year End (Year-over-Year Change)				
			2018	2017	2016	2015	2014
Juveniles Signed Up for Summer Reading Program	0	0	747 (-35%)	1,153 (+19%)	967 (+13%)	859	0
Young Adults Signed up for Summer Reading Program	0	0	378 (-2%)	385 (+241%)	113 (-64%)	311	0
Adults Signed Up for Summer Reading Program	0	0	248 (+112%)	117 (+36%)	86 (+1%)	85	0
TOTAL Summer Reading Program Signups	0	0	1,373 (-17%)	1,655 (+42%)	1,166 (-7%)	1,255	0

Summer Reading Program Completions

April 2019

	BDL Monthly Total	BDL YTD	BDL Year End (Year-over-Year Change)				
			2018	2017	2016	2015	2014
Juveniles who Completed Summer Reading Program	0	0	260 (-50%)	518 (+13%)	459 (-10%)	512	0
Young Adults who Completed Summer Reading Program	0	0	135 (-50%)	268 (+332%)	62 (-49%)	122	0
Adults who Completed Summer Reading Program	0	0	165 (+72%)	96 (+60%)	60 (+7%)	56	0
TOTAL Summer Reading Program Completions	0	0	560 (-37%)	882 (+52%)	581 (-16%)	690	0

Library-Provided Computer Services

April 2019

	BDL Monthly Total	BDL YTD	BDL Year End (Year-over-Year Change)				
			2018	2017	2016	2015	2014
One-hour sessions on Library Wifi	40,660	164,889 (+7%)	465,219 (+9%)	425,714 (+4%)	410,437 (+17%)	351,423 (+18%)	298,098 (+37%)
Desktop, Laptop, and Tablet Computers Available for Public Use	88		89 (+22%)	73	73	73	73
Sessions on Library-Provided Computers	2,695	9,798 (-25%)	45,687 (+3%)	44,181 (+6%)	41,513 (-11%)	46,405 (+6%)	43,756 (-6%)
Hours Library-Provided Computers Used (Tracking Since 2018)	2,039.27	6,897.29 (+5%)	24,701.55	0.00	0.00	0.00	0.00
Desktop, Laptop, and Tablet Computers Available for Staff Use	52		50 (+22%)	41	41	41	41

Website Stats

April 2019

	BDL Monthly Total	BDL YTD	BDL Year End (Year-over-Year Change)				
			2018	2017	2016	2015	2014
Monthly Website Sessions	4,736	18,500 (+28%)	45,594 (-38%)	73,326 (-2%)	75,139 (+3%)	72,706 (+6%)	68,773 (-22%)
Monthly Website Page Views	10,766	43,651 (+18%)	118,634 (-33%)	177,799 (-2%)	182,084 (+7%)	169,630 (+4%)	163,277 (-8%)

Faxes, Prints, and Sales

April 2019

	BDL Monthly Total	BDL YTD	BDL Year End (Year-over-Year Change)				
			2018	2017	2016	2015	2014
Fax Pages Received	58	80 (-25%)	419 (+61%)	260 (+19%)	219 (+27%)	173 (+3%)	168 (+20%)
Fax Pages Sent	849	3,011 (+8%)	9,249 (+138%)	3,879 (+123%)	1,741 (-7%)	1,882 (+39%)	1,353 (+1%)
Free Prints for Job Seekers	226	1,067 (-10%)	3,631 (+16%)	3,128 (+9%)	2,878 (+23%)	2,335 (-23%)	3,024 (-21%)
Black and White Patron Prints (Tracking Since 6/2016)	7,900	25,478 (-17%)	81,016 (+7%)	75,606 (+113%)	35,561	0	0
Color Patron Prints (Tracking Since 6/2016)	926	3,835 (+12%)	12,285 (+20%)	10,253 (+154%)	4,036	0	0
Flash Drives Sold (Tracking Since 6/2016)	2	14 (-7%)	41 (-27%)	56 (+4%)	54	0	0
Earbuds Sold (Tracking Since 6/2016)	45	156 (+9%)	538 (+29%)	416 (+151%)	166	0	0

Fines and Fees

Overdue Fines Dropped in 2017

April 2019

	BDL Monthly Total	BDL YTD	BDL Year End (Year-over-Year Change)				
			2018	2017	2016	2015	2014
Fines and Fees Payments Received	\$ 180.25	\$ 1,082.53 (+21%)	\$ 2,412.73 (-68%)	\$ 7,628.31 (-24%)	\$ 10,062.96 (-30%)	\$ 14,448.76 (-3%)	\$ 14,827.36 (-4%)
Outstanding Fines and Fees	\$ 53,945.57		55,850.27 (-34%)	84,232.33 (-63%)	228,102.90 (+3%)	221,076.26 (+5%)	209,842.19 (+4%)

Debt Collections
 Unique Management Services, Inc.
 Tracking Since 2014

April 2019

	BDL Monthly Total	BDL YTD	BDL Year End (Year-over-Year Change)				
			2018	2017	2016	2015	2014
			Fine Payments as a Result of Collection Agency's Efforts	\$ 184.00	\$ 268.00 (+66%)	\$ 4,183.45 (+1,727%)	\$ 229.00 (-76%)
Library Materials Returned as a Result of Collection Agency's Efforts	\$ 0.00	\$ 0.00	\$ 462.00 (-48%)	\$ 888.95 (-33%)	\$ 1,317.93 (-2%)	\$ 1,346.89 (-28%)	\$ 1,864.69
What We Paid Collection Agency for Their Services	\$ 73.60	\$ 134.10 (+2%)	\$ 528.66 (-5%)	\$ 558.08 (-45%)	\$ 1,022.23 (-3%)	\$ 1,051.42 (+40%)	\$ 753.88

Value to Our Service Area
 Visit <https://www.BranchDistrictLibrary.org/value>
 to learn how we determine these numbers.

April 2019

	BDL Monthly Total	BDL YTD	BDL Year End (Year-over-Year Change)				
			2018	2017	2016	2015	2014
			Value from Physical Item Checkouts	\$ 153,354.30	\$ 591,723.20 (-3%)	\$ 1,888,907.75 (-12%)	\$ 2,135,671.28 (+0%)
Value from Attending Programs (Tracking Since 1/2018)	\$ 8,550.00	\$ 36,080.00 (-5%)	\$ 125,795.00	\$ 0.00	\$ 0.00	\$ 0.00	\$ 0.00
Value from Fax Service (Tracking Since 1/2018)	\$ 907.00	\$ 3,091.00 (+7%)	\$ 9,668.00	\$ 0.00	\$ 0.00	\$ 0.00	\$ 0.00
Value from Employment Prints (Tracking Since 1/2018)	\$ 33.90	\$ 160.05 (-10%)	\$ 544.65	\$ 0.00	\$ 0.00	\$ 0.00	\$ 0.00
Value from Notary Services (Tracking Since 1/2018)	\$ 70.00	\$ 155.00 (+63%)	\$ 330.00	\$ 0.00	\$ 0.00	\$ 0.00	\$ 0.00
Value from Digital Services (Tracking Since 1/2018)	\$ 10,584.00	\$ 43,992.00 (+8%)	\$ 127,476.00	\$ 0.00	\$ 0.00	\$ 0.00	\$ 0.00
Value from Using Library Computers (Tracking Since 1/2018)	\$ 6,117.81	\$ 20,691.87 (+5%)	\$ 74,104.66	\$ 0.00	\$ 0.00	\$ 0.00	\$ 0.00
Value from Using Library Wifi (Tracking Since 1/2018)	\$ 2,846.20	\$ 11,542.23 (+7%)	\$ 32,565.33	\$ 0.00	\$ 0.00	\$ 0.00	\$ 0.00
TOTAL Value of Free Library Services	\$ 182,463.21	\$ 707,435.35 (-2%)	\$ 2,259,391.39 (+6%)	\$ 2,135,671.28 (+0%)	\$ 2,132,387.79 (-2%)	\$ 2,167,140.68 (+0%)	\$ 2,167,024.48 (-9%)

Materials Expenditures

Tracking since 2018

April 2019

	BDL Monthly Total	BDL YTD	BDL Year End (Year-over-Year Change)				
			2018	2017	2016	2015	2014
Amount Spent on Books	\$ 9,981.32	\$ 36,093.76 (+17%)	\$ 93,763.50	\$ 0.00	\$ 0.00	\$ 0.00	\$ 0.00
Amount Spent on Periodicals	\$ 0.00	\$ 257.00 (-60%)	\$ 7,085.59	\$ 0.00	\$ 0.00	\$ 0.00	\$ 0.00
Amount Spent on Audiovisual Materials	\$ 1,255.23	\$ 5,401.27 (-7%)	\$ 17,998.47	\$ 0.00	\$ 0.00	\$ 0.00	\$ 0.00
Amount Spent on Digital Resources	\$ 0.00	\$ 9,518.92 (-16%)	\$ 43,798.90	\$ 0.00	\$ 0.00	\$ 0.00	\$ 0.00
TOTAL Spent on All Library Materials	\$ 11,236.55	\$ 51,270.95 (+5%)	\$ 162,646.46	\$ 0.00	\$ 0.00	\$ 0.00	\$ 0.00

Other Expenditures

Tracking since 2018

April 2019

	BDL Monthly Total	BDL YTD	BDL Year End (Year-over-Year Change)				
			2018	2017	2016	2015	2014
Total Materials Expenditures	\$ 11,236.55	\$ 51,270.95 (+5%)	\$ 162,646.46	\$ 0.00	\$ 0.00	\$ 0.00	\$ 0.00
Total Staff Expenditures	\$ 118,555.77	\$ 474,776.51 (+4%)	\$ 1,469,560.33	\$ 0.00	\$ 0.00	\$ 0.00	\$ 0.00
Expenditures in other categories	\$ 13,337.47	\$ 85,376.36 (-31%)	\$ 422,747.74	\$ 0.00	\$ 0.00	\$ 0.00	\$ 0.00
TOTAL Expenditures in all Categories	\$ 143,129.89	\$ 611,423.92 (-3%)	\$ 2,054,954.53	\$ 0.00	\$ 0.00	\$ 0.00	\$ 0.00

Staffing

April 2019

	BDL Monthly Total	BDL YTD	BDL Year End (Year-over-Year Change)				
			2018	2017	2016	2015	2014
Total BDL Staff	37	39 (avg) (-3%)	40 (avg) (+5%)	37 (avg) (+9%)	34 (avg) (+17%)	29 (avg) (-3%)	30 (avg) (-6%)
BDL Staff with MLS Degree	4	5 (avg) (-17%)	6 (avg) (+20%)	5 (avg) (+150%)	3 (avg)	2 (avg)	2 (avg) (-33%)
Worked Full-Time Equivalents	25.34	27.22 (avg)	26.92 (avg) (+8%)	24.91 (avg) (+41%)	17.90 (avg) (+13%)	15.75 (avg) (-6%)	16.81 (avg) (-16%)
Hours of Specialized Training for Staff (Tracking Since 1/2019)	3	70	0	0	0	0	0
Hours Volunteers Worked at the Library (Tracking Since 1/2019)	40	458	0	0	0	0	0

Outreach Services

Began 2018

April 2019

	BDL Monthly Total	BDL YTD	BDL Year End (Year-over-Year Change)				
			2018	2017	2016	2015	2014
Number of Patrons Served by Outreach Services	17	48 (+78%)	76 (+2,433%)	3	0	0	0
Number of Items Delivered to Outreach Patrons	28	135 (-34%)	606 (+2,231%)	26	0	0	0

Coldwater Branch Heritage Room
Stats part of Coldwater Branch totals above; shown here for convenience.

April 2019

	Heritage Room	BDL YTD	BDL Year End (Year-over-Year Change)				
			2018	2017	2016	2015	2014
Heritage Room Attendance	36	128 (-51%)	736 (+12%)	658 (-7%)	705 (+51%)	468 (+50%)	312
In-Person Reference Questions	35	124 (-45%)	708 (+29%)	550 (+664%)	72 (+140%)	30 (-27%)	41 (+71%)
Reference Telephone Calls	12	72 (-43%)	277 (-36%)	433 (+15%)	376 (+83%)	206 (+145%)	84
Online Reference Questions	4	27 (-4%)	60 (-5%)	63 (-24%)	83 (+8%)	77 (+79%)	43

Coldwater Branch Kids' Place
Stats part of Coldwater Branch totals above; shown here for convenience.
Tracking separately since April 2019.

April 2019

	Kids' Place	BDL YTD	BDL Year End (Year-over-Year Change)				
			2018	2017	2016	2015	2014
Kids' Place Attendance	818	818	0	0	0	0	0
In-Person Reference Questions	95	95	0	0	0	0	0
Reference Telephone Calls	29	29	0	0	0	0	0
Online Reference Questions	0	0	0	0	0	0	0

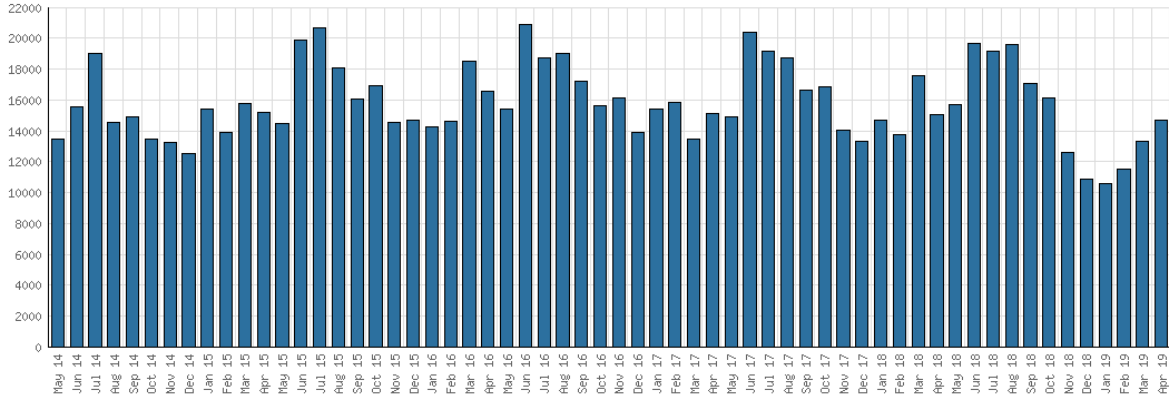
Coldwater Branch Teen Space
Stats part of Coldwater Branch totals above; shown here for convenience.
Tracking separately since April 2019.

April 2019

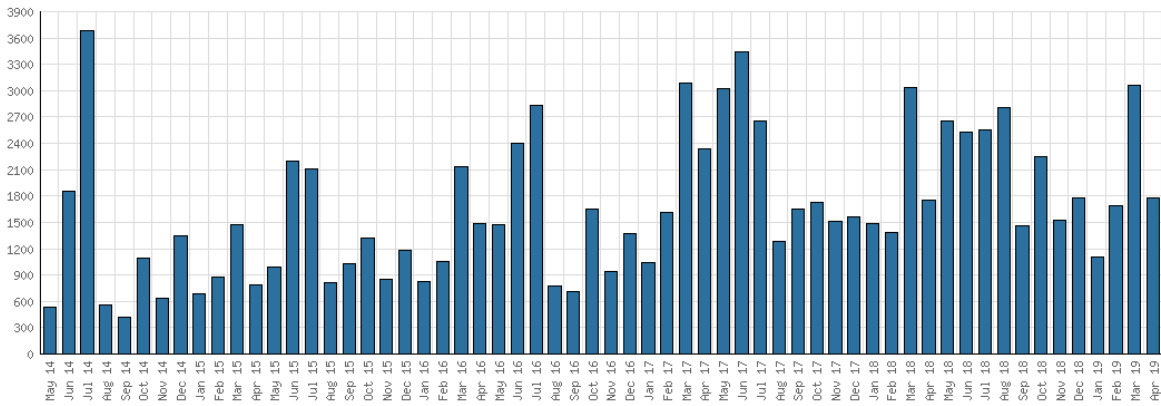
	Teen Space	BDL YTD	BDL Year End (Year-over-Year Change)				
			2018	2017	2016	2015	2014
Teen Space Attendance	596	596	0	0	0	0	0
In-Person Reference Questions	8	8	0	0	0	0	0
Reference Telephone Calls	0	0	0	0	0	0	0
Online Reference Questions	0	0	0	0	0	0	0

Selected Graphs 5-year Monthly Trends

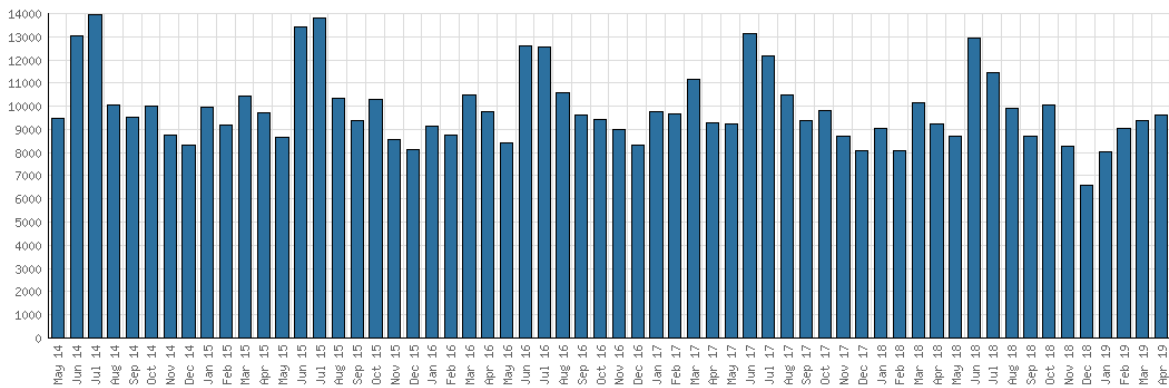
District Attendance



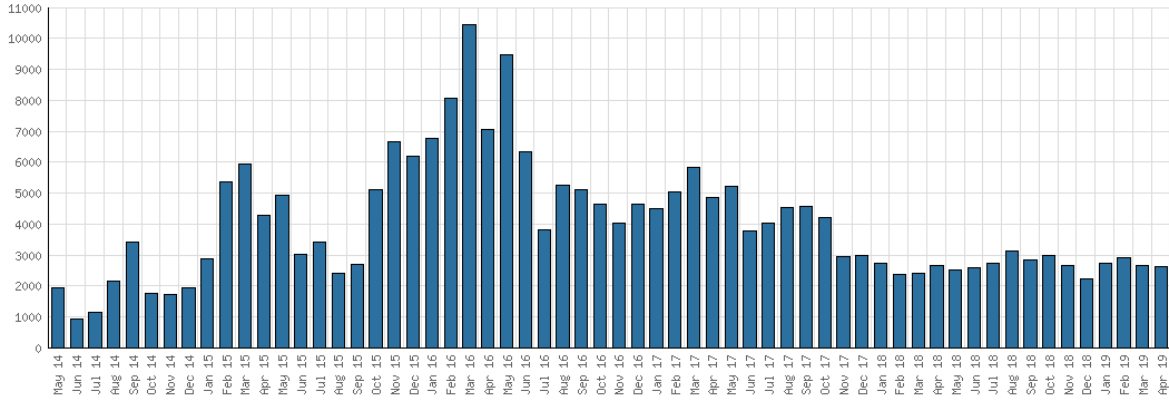
District Program Attendance



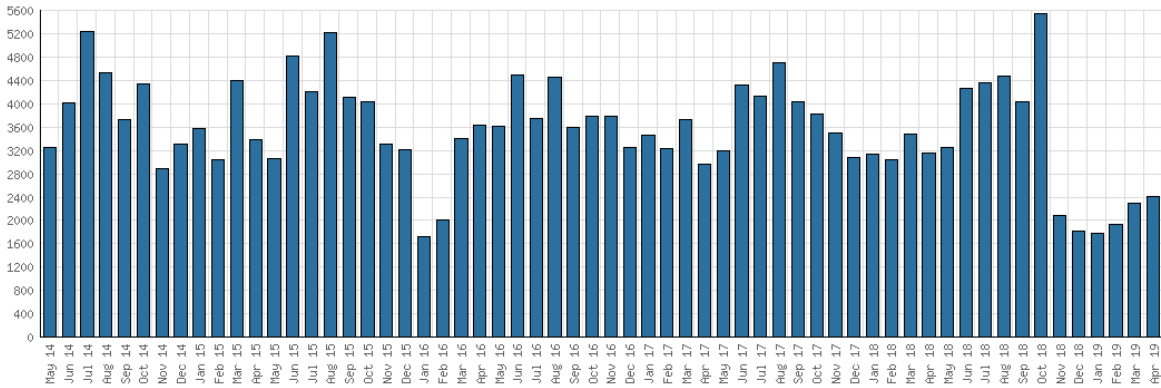
District Physical Checkouts



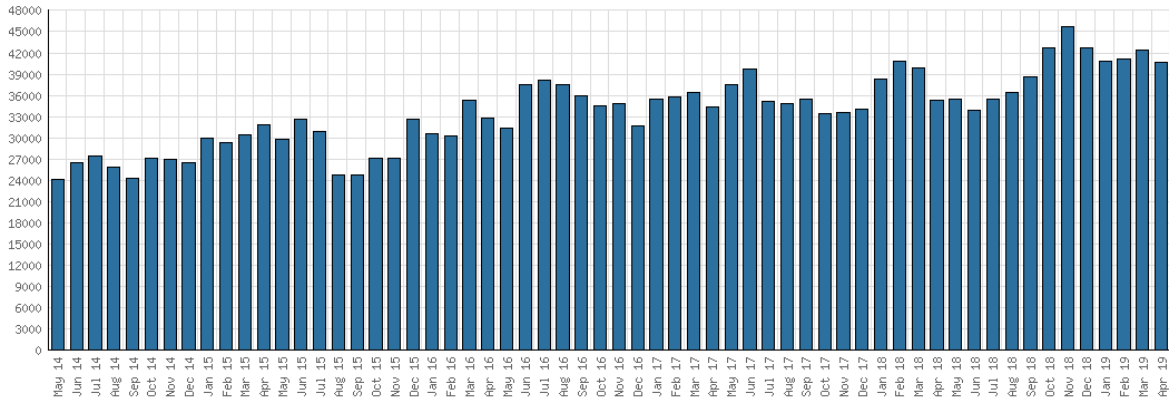
District Digital Usage



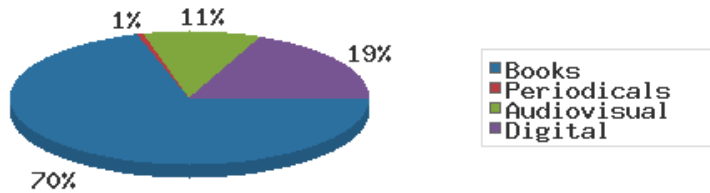
District Use of Library-Provided Computers



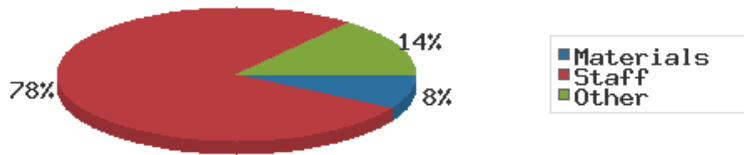
District One-Hour Sessions on Library Wifi



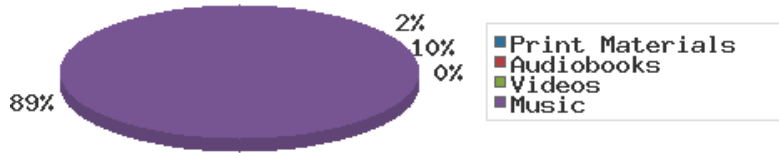
Year-to-Date Materials Expenditures



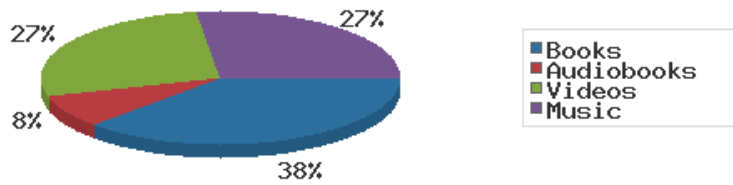
YTD Expenditures in all Categories



Physical Collection



Digital Collection



YTD Usage Breakdown of Digital Services

